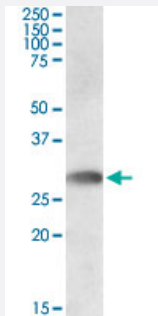


# TREML1 polyclonal antibody

Catalog # PAB17232      Size 100 ug

## Applications



### Western Blot (Tissue lysate)

TREML1 polyclonal antibody (Cat # PAB17232) staining (0.5 ug/mL) of human bone marrow lysate (RIPA buffer, 35 ug total protein per lane). Primary incubated for 1 hour. Detected by western blot using chemiluminescence.

## Specification

<b>Product Description</b>	Goat polyclonal antibody raised against synthetic peptide of TREML1.
<b>Immunogen</b>	A synthetic peptide corresponding to human TREML1.
<b>Sequence</b>	CGPAQNPPNNQTPS
<b>Host</b>	Goat
<b>Theoretical MW (kDa)</b>	32.7
<b>Reactivity</b>	Human
<b>Specificity</b>	This antibody may cross-react with mouse TREML1 (GeneID: 71326; MW: 34.28 KDa).
<b>Form</b>	Liquid
<b>Purification</b>	Antigen affinity purification
<b>Concentration</b>	0.5 mg/mL
<b>Recommend Usage</b>	ELISA (1:2000) Western Blot (0.3-1 ug/mL) The optimal working dilution should be determined by the end user.

Storage Buffer	In Tris saline, pH 7.3 (0.5% BSA, 0.02% sodium azide)
Storage Instruction	Store at -20°C. Aliquot to avoid repeated freezing and thawing.
Note	This product contains sodium azide: a POISONOUS AND HAZARDOUS SUBSTANCE which should be handled by trained staff only.

## Applications

- Western Blot (Tissue lysate)

TREML1 polyclonal antibody (Cat # PAB17232) staining (0.5 ug/mL) of human bone marrow lysate (RIPA buffer, 35 ug total protein per lane). Primary incubated for 1 hour. Detected by western blot using chemiluminescence.

- Enzyme-linked Immunoabsorbent Assay

## Gene Info — TREML1

Entrez GeneID	<a href="#">340205</a>
Protein Accession#	<a href="#">NP_835468.1</a>
Gene Name	TREML1
Gene Alias	GLTL1825, MGC119173, PRO3438, TLT-1, TLT1, dJ238O23.3
Gene Description	triggering receptor expressed on myeloid cells-like 1
Omim ID	<a href="#">609714</a>
Gene Ontology	<a href="#">Hyperlink</a>
Gene Summary	TREML1 is located in a gene cluster on chromosome 6 with the single Ig variable (IgV) domain activating receptors TREM1 (MIM 605085) and TREM2 (MIM 605086), but it has distinct structural and functional properties. TREML1 enhances calcium signaling in an SHP2 (PTPN11; MIM 176876)-dependent manner (Allcock et al., 2003 [PubMed 12645956]; Barrow et al., 2004 [PubMed 15128762]).[supplied by OMIM]
Other Designations	OTTHUMP00000017858 TREM-like transcript 1

## Publication Reference

- [Phenotypic heterogeneity in the Gray platelet syndrome extends to the expression of TREM family member, TLT-1.](#)

Nurden AT, Nurden P, Bermejo E, Combrie R, McVicar DW, Washington AV.

Research and Practice in Thrombosis and Haemostasis 2008 Jul; 100(1):45.