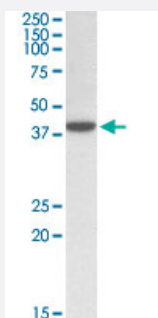


ERLIN1 polyclonal antibody

Catalog # PAB17226

Size 100 ug

Applications



Western Blot (Tissue lysate)

ERLIN1 polyclonal antibody (Cat # PAB17226) (0.5 ug/mL) staining of human placenta lysate (35 ug protein in RIPA buffer). Primary incubation was 1 hour. Detected by chemiluminescence.

Specification

Product Description	Goat polyclonal antibody raised against synthetic peptide of ERLIN1.
Immunogen	A synthetic peptide corresponding to human ERLIN1.
Sequence	C-EALEPSGENVIQNKE
Host	Goat
Theoretical MW (kDa)	39.2
Reactivity	Human
Specificity	Reported variants represent identical protein: NP_006450.2, NP_001094096.1
Form	Liquid
Purification	Antigen affinity purification
Concentration	0.5 mg/mL
Recommend Usage	ELISA (1:8000) Western Blot (0.3-1 ug/mL) The optimal working dilution should be determined by the end user.

Storage Buffer	In Tris saline, pH 7.3 (0.5% BSA, 0.02% sodium azide)
Storage Instruction	Store at -20°C. Aliquot to avoid repeated freezing and thawing.
Note	This product contains sodium azide: a POISONOUS AND HAZARDOUS SUBSTANCE which should be handled by trained staff only.

Applications

- Western Blot (Tissue lysate)

ERLIN1 polyclonal antibody (Cat # PAB17226) (0.5 ug/mL) staining of human placenta lysate (35 ug protein in RIPA buffer). Primary incubation was 1 hour. Detected by chemiluminescence.

- Enzyme-linked Immunoabsorbent Assay

Gene Info — ERLIN1

Entrez GeneID	10613
Protein Accession#	NP_006450.2
Gene Name	ERLIN1
Gene Alias	C10orf69, Erlin-1, KE04, KEO4, SPFH1
Gene Description	ER lipid raft associated 1
Omim ID	611604
Gene Ontology	Hyperlink
Gene Summary	member 1
Other Designations	Band_7 23-211 Keo4 (Interim) similar to C.elegans protein C42C1.9 OTTHUMP00000059425 S PFH domain family, member 1

Publication Reference

- [Erlin-1 and erlin-2 are novel members of the prohibitin family of proteins that define lipid-raft-like domains of the ER.](#)

Browman DT, Resek ME, Zajchowski LD, Robbins SM.

Journal of Cell Science 2006 Jul; 119(Pt 15):3149.

Disease

- [Tobacco Use Disorder](#)