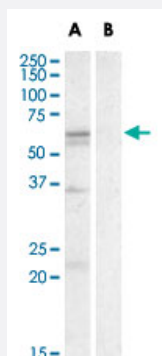


SLC7A5 polyclonal antibody

Catalog # PAB17222 Size 100 ug

Applications



Western Blot (Tissue lysate)

SLC7A5 polyclonal antibody (Cat # PAB17222) (0.3 ug/mL) staining of human spleen lysate (35 ug protein in RIPA buffer) with (B) and without (A) blocking with the immunising peptide. Primary incubation was 1 hour. Detected by chemiluminescence.

Specification

Product Description	Goat polyclonal antibody raised against synthetic peptide of SLC7A5.
Immunogen	A synthetic peptide corresponding to amino acids at internal region of human SLC7A5.
Sequence	C-RHRKPELERPIKVN
Host	Goat
Theoretical MW (kDa)	55
Reactivity	Human
Form	Liquid
Purification	Antigen affinity purification
Concentration	0.5 mg/mL
Recommend Usage	ELISA (1:64000) Western Blot (1-3 ug/mL) The optimal working dilution should be determined by the end user.

Storage Buffer	In Tris saline, pH 7.3 (0.5% BSA, 0.02% sodium azide)
Storage Instruction	Store at -20°C. Aliquot to avoid repeated freezing and thawing.
Note	This product contains sodium azide: a POISONOUS AND HAZARDOUS SUBSTANCE which should be handled by trained staff only.

Applications

- Western Blot (Tissue lysate)

SLC7A5 polyclonal antibody (Cat # PAB17222) (0.3 ug/mL) staining of human spleen lysate (35 ug protein in RIPA buffer) with (B) and without (A) blocking with the immunising peptide. Primary incubation was 1 hour. Detected by chemiluminescence.

- Enzyme-linked Immunoabsorbent Assay

Gene Info — SLC7A5

Entrez GeneID	8140
Protein Accession#	NP_003477.4
Gene Name	SLC7A5
Gene Alias	4F2LC, CD98, D16S469E, E16, LAT1, MPE16, hLAT1
Gene Description	solute carrier family 7 (cationic amino acid transporter, y ⁺ system), member 5
Omim ID	600182
Gene Ontology	Hyperlink
Gene Summary	y ⁺ system)
Other Designations	4F2 light chain CD98 light chain L-type amino acid transporter 1 integral membrane protein E16 large neutral amino acids transporter 1 large neutral amino acids transporter small subunit 1 sodium-independent neutral amino acid transporter LAT1

Publication Reference

- [Production and characterization of highly tumor-specific rat monoclonal antibodies recognizing the extracellular domain of human L-type amino-acid transporter 1.](#)

Ohno Y, Suda K, Masuko K, Yagi H, Hashimoto Y, Masuko T.

Cancer Science 2008 Feb; 99(5):1000.

Disease

- [Autistic Disorder](#)
- [Genetic Predisposition to Disease](#)
- [Kidney Failure](#)
- [Lymphoma](#)
- [Multiple Myeloma](#)