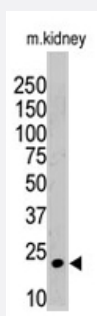


ISG15 polyclonal antibody

Catalog # PAB1720

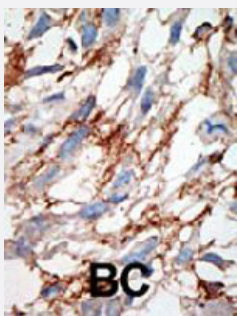
Size 400 uL

Applications



Western Blot (Tissue lysate)

The ISG15 polyclonal antibody (Cat # PAB1720) is used in Western blot to detect ISG15 in mouse kidney tissue lysate.



Immunohistochemistry (Formalin/PFA-fixed paraffin-embedded sections)

Formalin-fixed and paraffin-embedded human cancer tissue reacted with ISG15 polyclonal antibody (Cat # PAB1720), which was peroxidase-conjugated to the secondary antibody, followed by DAB staining. This data demonstrates the use of this antibody for immunohistochemistry; clinical relevance has not been evaluated. BC = breast carcinoma.

Specification

Product Description	Rabbit polyclonal antibody raised against synthetic peptide of ISG15.
Immunogen	A synthetic peptide (conjugated with KLH) corresponding to N-terminus of human ISG15.
Host	Rabbit
Reactivity	Human
Form	Liquid
Purification	Protein G purification

Recommend Usage	Western Blot (1:1000) Immunohistochemistry (1:50-100) The optimal working dilution should be determined by the end user.
Storage Buffer	In PBS (0.09% sodium azide)
Storage Instruction	Store at 4°C. For long term storage store at -20°C. Aliquot to avoid repeated freezing and thawing.
Note	This product contains sodium azide: a POISONOUS AND HAZARDOUS SUBSTANCE which should be handled by trained staff only.

Applications

- Western Blot (Tissue lysate)

The ISG15 polyclonal antibody (Cat # PAB1720) is used in Western blot to detect ISG15 in mouse kidney tissue lysate.

- Immunohistochemistry (Formalin/PFA-fixed paraffin-embedded sections)

Formalin-fixed and paraffin-embedded human cancer tissue reacted with ISG15 polyclonal antibody (Cat # PAB1720), which was peroxidase-conjugated to the secondary antibody, followed by DAB staining. This data demonstrates the use of this antibody for immunohistochemistry; clinical relevance has not been evaluated. BC = breast carcinoma.

Gene Info — ISG15

Entrez GeneID	9636
Protein Accession#	NP_005092:P05161
Gene Name	ISG15
Gene Alias	G1P2, IFI15, UCRP
Gene Description	ISG15 ubiquitin-like modifier
Omim ID	147571
Gene Ontology	Hyperlink
Gene Summary	ISG15 is a ubiquitin-like protein that becomes conjugated to many cellular proteins upon activation by interferon-alpha (IFNA; MIM 147660) and -beta (IFNB; MIM 147640) (Zhao et al., 2005 [PubMed 16009940]).[supplied by OMIM]
Other Designations	OTTHUMP00000038464 interferon, alpha-inducible protein (clone IFI-15K) interferon-induced 17-kDa/15-kDa protein interferon-stimulated protein, 15 kDa ubiquitin cross-reactive protein

Publication Reference

- [IFN-stimulated gene 15 is synergistically activated through interactions between the myelocyte/lymphocyte-specific transcription factors, PU.1, IFN regulatory factor-8/IFN consensus sequence binding protein, and IFN regulatory factor-4: characterization of a new subtype of IFN-stimulated response element.](#)

Meraro D, Gleit-Kielmanowicz M, Hauser H, Levi BZ.

Journal of Immunology 2002 Jun; 168(12):6224.

- [Interferon-induced transcription of a gene encoding a 15-kDa protein depends on an upstream enhancer element.](#)

Reich N, Evans B, Levy D, Fahey D, Knight E Jr, Darnell JE Jr.

PNAS 1987 Sep; 84(18):6394.

Disease

- [Cardiovascular Diseases](#)
- [Diabetes Mellitus](#)
- [Edema](#)
- [Genetic Predisposition to Disease](#)
- [Osteoporosis](#)
- [Ovarian Neoplasms](#)
- [Respiratory Syncytial Virus Infections](#)