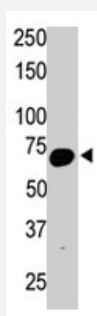


SYVN1 polyclonal antibody

Catalog # PAB1717

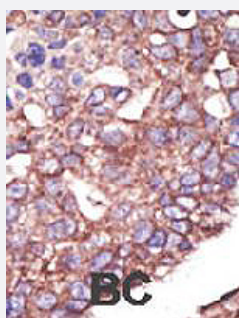
Size 400 uL

Applications



Western Blot (Tissue lysate)

The SYVN1 polyclonal antibody (Cat # PAB1717) is used in Western blot to detect SYVN1 in mouse kidney tissue lysate.



Immunohistochemistry (Formalin/PFA-fixed paraffin-embedded sections)

Formalin-fixed and paraffin-embedded human cancer tissue reacted with SYVN1 polyclonal antibody (Cat # PAB1717), which was peroxidase-conjugated to the secondary antibody, followed by DAB staining. This data demonstrates the use of this antibody for immunohistochemistry; clinical relevance has not been evaluated. BC = breast carcinoma.

Specification

Product Description	Rabbit polyclonal antibody raised against synthetic peptide of SYVN1.
Immunogen	A synthetic peptide (conjugated with KLH) corresponding to C-terminus of human SYVN1.
Host	Rabbit
Reactivity	Human, Mouse
Form	Liquid
Purification	Protein G purification

Recommend Usage	Western Blot (1:1000) Immunohistochemistry (1:50-100) The optimal working dilution should be determined by the end user.
Storage Buffer	In PBS (0.09% sodium azide)
Storage Instruction	Store at 4°C. For long term storage store at -20°C. Aliquot to avoid repeated freezing and thawing.
Note	This product contains sodium azide: a POISONOUS AND HAZARDOUS SUBSTANCE which should be handled by trained staff only.

Applications

- Western Blot (Tissue lysate)

The SYVN1 polyclonal antibody (Cat # PAB1717) is used in Western blot to detect SYVN1 in mouse kidney tissue lysate.

- Immunohistochemistry (Formalin/PFA-fixed paraffin-embedded sections)

Formalin-fixed and paraffin-embedded human cancer tissue reacted with SYVN1 polyclonal antibody (Cat # PAB1717), which was peroxidase-conjugated to the secondary antibody, followed by DAB staining. This data demonstrates the use of this antibody for immunohistochemistry; clinical relevance has not been evaluated. BC = breast carcinoma.

Gene Info — SYVN1

Entrez GeneID	84447
Protein Accession#	Q8N6E8
Gene Name	SYVN1
Gene Alias	HRD1, KIAA1810, MGC40372
Gene Description	synovial apoptosis inhibitor 1, synoviolin
Omim ID	608046
Gene Ontology	Hyperlink
Gene Summary	This gene encodes a protein involved in endoplasmic reticulum (ER)-associated degradation. The encoded protein removes unfolded proteins, accumulated during ER stress, by retrograde transport to the cytosol from the ER. This protein also uses the ubiquitin-proteasome system for additional degradation of unfolded proteins. This gene and the mitochondrial ribosomal protein L49 gene use in their respective 3' UTRs some of the same genomic sequence. Sequence analysis identified two transcript variants that encode different isoforms. [provided by RefSeq]
Other Designations	synoviolin 1

Publication Reference

- [WFS1-deficiency increases endoplasmic reticulum stress, impairs cell cycle progression and triggers the apoptotic pathway specifically in pancreatic beta-cells.](#)

Yamada T, Ishihara H, Tamura A, Takahashi R, Yamaguchi S, Takei D, Tokita A, Satake C, Tashiro F, Katagiri H, Aburatani H, Miyazaki J, Oka Y.

Human Molecular Genetics 2006 Mar; 15(10):1600.

Pathway

- [Ubiquitin mediated proteolysis](#)