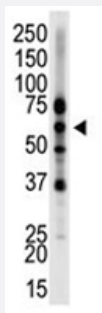


EPN2 polyclonal antibody

Catalog # PAB1710

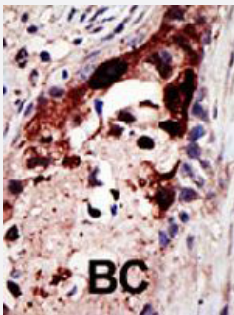
Size 400 uL

Applications



Western Blot (Tissue lysate)

The EPN2 polyclonal antibody (Cat # PAB1710) is used in Western blot to detect EPN2 in mouse brain tissue lysate.



Immunohistochemistry (Formalin/PFA-fixed paraffin-embedded sections)

Formalin-fixed and paraffin-embedded human cancer tissue reacted with EPN2 polyclonal antibody (Cat # PAB1710), which was peroxidase-conjugated to the secondary antibody, followed by AEC staining. This data demonstrates the use of this antibody for immunohistochemistry; clinical relevance has not been evaluated. BC = breast carcinoma.

Specification

Product Description	Rabbit polyclonal antibody raised against synthetic peptide of EPN2.
Immunogen	A synthetic peptide (conjugated with KLH) corresponding to N-terminus of human EPN2.
Host	Rabbit
Reactivity	Human, Mouse
Form	Liquid
Purification	Protein G purification

Recommend Usage	Western Blot (1:1000) Immunohistochemistry (1:50-100) The optimal working dilution should be determined by the end user.
Storage Buffer	In PBS (0.09% sodium azide)
Storage Instruction	Store at 4°C. For long term storage store at -20°C. Aliquot to avoid repeated freezing and thawing.
Note	This product contains sodium azide: a POISONOUS AND HAZARDOUS SUBSTANCE which should be handled by trained staff only.

Applications

- Western Blot (Tissue lysate)

The EPN2 polyclonal antibody (Cat # PAB1710) is used in Western blot to detect EPN2 in mouse brain tissue lysate.

- Immunohistochemistry (Formalin/PFA-fixed paraffin-embedded sections)

Formalin-fixed and paraffin-embedded human cancer tissue reacted with EPN2 polyclonal antibody (Cat # PAB1710), which was peroxidase-conjugated to the secondary antibody, followed by AEC staining. This data demonstrates the use of this antibody for immunohistochemistry; clinical relevance has not been evaluated. BC = breast carcinoma.

Gene Info — EPN2

Entrez GeneID	22905
Protein Accession#	O95207
Gene Name	EPN2
Gene Alias	EHB21, KIAA1065
Gene Description	epsin 2
Omim ID	607263
Gene Ontology	Hyperlink
Gene Summary	This gene encodes a protein which interacts with clathrin and adaptor-related protein complex 2, alpha 1 subunit. The protein is found in a brain-derived clathrin-coated vesicle fraction and localizes to the peri-Golgi region and the cell periphery. The protein is thought to be involved in clathrin-mediated endocytosis. Alternate splicing of this gene results in multiple transcript variants encoding different isoforms. [provided by RefSeq]
Other Designations	Eps15 binding protein OTTHUMP00000065810 OTTHUMP00000065889

Publication Reference

- [Complete sequencing and characterization of 21,243 full-length human cDNAs.](#)

Ota T, Suzuki Y, Nishikawa T, Otsuki T, Sugiyama T, Irie R, Wakamatsu A, Hayashi K, Sato H, Nagai K, Kimura K, Makita H, Sekine M, Obayashi M, Nishi T, Shibahara T, Tanaka T, Ishii S, Yamamoto J, Saito K, Kawai Y, Isono Y, Nakamura Y, Nagahari K, Murakami K, Yasuda T, Iwayanagi T, Wagatsuma M, Shiratori A, Sudo H, Hosoiri T, Kaku Y, Kodaira H, Kondo H, Sugawara M, Takahashi M, Kanda K, Yokoi T, Furuya T, Kikkawa E, Omura Y, Abe K, Kamihara K, Katsuta N, Sato K, Tanikawa M, Yamazaki M, Ninomiya K

Nature Genetics 2003 Dec; 36(1):40.

- [The epsins define a family of proteins that interact with components of the clathrin coat and contain a new protein module.](#)

Rosenthal JA, Chen H, Slepnev VI, Pellegrini L, Salcini AE, Di Fiore PP, De Camilli P.

The Journal of Biological Chemistry 1999 Nov; 274(48):33959.

Application: IP, WB-Ti, WB-Tr, Human, Mouse, Rat, Brains, CHO cells

- [Prediction of the coding sequences of unidentified human genes. XIV. The complete sequences of 100 new cDNA clones from brain which code for large proteins in vitro.](#)

Kikuno R, Nagase T, Ishikawa K, Hirose M, Miyajima N, Tanaka A, Kotani H, Nomura N, Ohara O.

DNA Research 1999 Jun; 6(3):197.

Pathway

- [Endocytosis](#)

Disease

- [Tobacco Use Disorder](#)