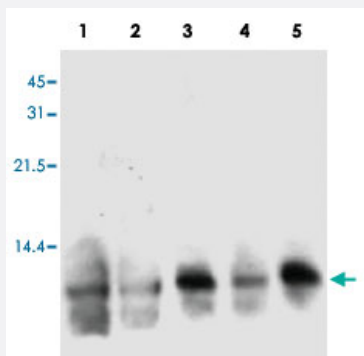


S100A3 polyclonal antibody

Catalog # PAB17047

Size 50 ug

Applications



Western Blot (Tissue lysate)

Western blot analysis of human S100A3 in hair extracts from 3 individual female.

Lane 1 : base of hair from A. S.

Lane 2 : tip of hair from A. S.

Lane 3 : base of hair from M. S.

Lane 4 : tip of hair from M. S.

Lane 5 : base of hair from Y. K.

Lane 6 : tip of hair from Y. K.

Specification

Product Description Rabbit polyclonal antibody raised against full length recombinant S100A3.

Immunogen Recombinant protein corresponding to full length human S100A3.

Host Rabbit

Reactivity Human

Form Liquid

Recommend Usage Western Blot (0.5-1 ug/mL)
The optimal working dilution should be determined by the end user.

Storage Buffer In 10 mM phosphate buffer, 150 mM NaCl, pH 7.5 (50% glycerol)

Storage Instruction Store at -20°C.
Aliquot to avoid repeated freezing and thawing.

Applications

- Western Blot (Tissue lysate)

Western blot analysis of human S100A3 in hair extracts from 3 individual female.

Lane 1 : base of hair from A. S.

Lane 2 : tip of hair from A. S.

Lane 3 : base of hair from M. S.

Lane 4 : tip of hair from M. S.

Lane 5 : base of hair from Y. K.

Lane 6 : tip of hair from Y. K.

Gene Info — S100A3

Entrez GeneID	6274
---------------	----------------------

Gene Name	S100A3
-----------	--------

Gene Alias	S100E
------------	-------

Gene Description	S100 calcium binding protein A3
------------------	---------------------------------

Omim ID	176992
---------	------------------------

Gene Ontology	Hyperlink
---------------	---------------------------

Gene Summary	The protein encoded by this gene is a member of the S100 family of proteins containing 2 EF-hand calcium-binding motifs. S100 proteins are localized in the cytoplasm and/or nucleus of a wide range of cells, and involved in the regulation of a number of cellular processes such as cell cycle progression and differentiation. S100 genes include at least 13 members which are located as a cluster on chromosome 1q21. This protein has the highest content of cysteines of all S100 proteins, has a high affinity for Zinc, and is highly expressed in human hair cuticle. The precise function of this protein is unknown. [provided by RefSeq]
--------------	--

Other Designations	OTTHUMP00000015474 OTTHUMP00000032963 S100 calcium-binding protein A3
--------------------	---

Publication Reference

- [Supratentorial pilocytic astrocytomas, astrocytomas, anaplastic astrocytomas and glioblastomas are characterized by a differential expression of S100 proteins.](#)

Camby I, Nagy N, Lopes MB, Schafer BW, Maurage CA, Ruchoux MM, Murmann P, Pochet R, Heizmann CW, Brotchi J, Salmon I, Kiss R, Decaestecker C.

Brain Pathology 1999 Jan; 9(1):1.

Application: IHC-P, Human, Anaplastic astrocytomas, Glioblastomas, Supratentorial pilocytic astrocytomas, astrocytomas

- [Gene expression of mouse S100A3, a cysteine-rich calcium-binding protein, in developing hair follicle.](#)

Kizawa K, Tsuchimoto S, Hashimoto K, Uchiwa H.

The Journal of Investigative Dermatology 1998 Nov; 111(5):879.

Application: IHC-P, Mouse, Hair follicles

- [Highly-expressed S100A3, a calcium-binding protein, in human hair cuticle.](#)

Kizawa K, Uchiwa H, Murakami U.

Biochimica et Biophysica Acta 1996 Jun; 1312(2):94.

Application: IF, IHC-Fr, WB-Ti, Human, Human hair fibers

Disease

- [Dermatitis](#)
- [Genetic Predisposition to Disease](#)