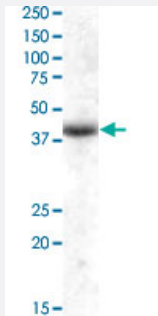


APOL6 polyclonal antibody

Catalog # PAB17038 Size 100 ug

Applications



Western Blot (Tissue lysate)

APOL6 polyclonal antibody (Cat # PAB17038) (2 ug/mL) staining of human skeletal muscle lysate (35 ug protein in RIPA buffer). Primary incubation was 1 hour. Detected by chemiluminescence.

Specification

Product Description Goat polyclonal antibody raised against synthetic peptide of APOL6.

Immunogen A synthetic peptide corresponding to human APOL6.

Sequence C-DDIDKTHKKFTKAN

Host Goat

Theoretical MW (kDa) 38.1

Reactivity Human

Form Liquid

Purification Antigen affinity purification

Concentration 0.5 mg/mL

Recommend Usage ELISA (1:2000)
Western Blot (1-3 ug/mL)
The optimal working dilution should be determined by the end user.

Storage Buffer In Tris saline, pH 7.3 (0.5% BSA, 0.02% sodium azide)

Storage Instruction

Store at -20°C.
Aliquot to avoid repeated freezing and thawing.

Note

This product contains sodium azide: a POISONOUS AND HAZARDOUS SUBSTANCE which should be handled by trained staff only.

Applications

- Western Blot (Tissue lysate)

APOL6 polyclonal antibody (Cat # PAB17038) (2 ug/mL) staining of human skeletal muscle lysate (35 ug protein in RIPA buffer). Primary incubation was 1 hour. Detected by chemiluminescence.

- Enzyme-linked Immunoabsorbent Assay

Gene Info — APOL6

Entrez GeneID[80830](#)**Protein Accession#**[NP_085144.1](#)**Gene Name**

APOL6

Gene Alias

APOL-VI, APOLVI, DKFZp667M075, FLJ38562, FLJ90164, MGC57495

Gene Description

apolipoprotein L, 6

Omim ID[607256](#)**Gene Ontology**[Hyperlink](#)**Gene Summary**

This gene is a member of the apolipoprotein L gene family. The encoded protein is found in the cytoplasm, where it may affect the movement of lipids or allow the binding of lipids to organelles. [provided by RefSeq]

Other Designations

apolipoprotein L-V||apolipoprotein L6

Publication Reference

- [Apolipoprotein I6, a novel proapoptotic Bcl-2 homology 3-only protein, induces mitochondria-mediated apoptosis in cancer cells.](#)

Liu Z, Lu H, Jiang Z, Pastuszyn A, Hu CA.

Molecular Cancer Research 2005 Jan; 3(1):21.

Application: IP, Human, DLD-1 cells

Disease

- [Attention](#)
- [Genetic Predisposition to Disease](#)
- [Neuropsychological Tests](#)
- [Problem Solving](#)
- [Schizophrenia](#)