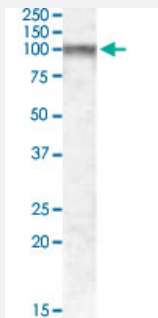


CPT1C polyclonal antibody

Catalog # PAB17036 Size 100 ug

Applications



Western Blot (Tissue lysate)

CPT1C polyclonal antibody (Cat # PAB17036) (1 ug/mL) staining of human frontal cortex lysate (35 ug protein in RIPA buffer). Primary incubation was 1 hour. Detected by chemiluminescence.

Specification

Product Description	Goat polyclonal antibody raised against synthetic peptide of CPT1C.
Immunogen	A synthetic peptide corresponding to human CPT1C.
Sequence	C-KSSTKTDSHRLGQH
Host	Goat
Theoretical MW (kDa)	91
Reactivity	Human
Form	Liquid
Purification	Antigen affinity purification
Concentration	0.5 mg/mL
Recommend Usage	ELISA (1:16000) Western Blot (1-3 ug/mL) The optimal working dilution should be determined by the end user.
Storage Buffer	In Tris saline, pH 7.3 (0.5% BSA, 0.02% sodium azide)

Storage Instruction

Store at -20°C.
Aliquot to avoid repeated freezing and thawing.

Note

This product contains sodium azide: a POISONOUS AND HAZARDOUS SUBSTANCE which should be handled by trained staff only.

Applications

- Western Blot (Tissue lysate)

CPT1C polyclonal antibody (Cat # PAB17036) (1 ug/mL) staining of human frontal cortex lysate (35 ug protein in RIPA buffer). Primary incubation was 1 hour. Detected by chemiluminescence.

- Enzyme-linked Immunoabsorbent Assay

Gene Info — CPT1C

Entrez GeneID[126129](#)**Protein Accession#**[NP_689572.1](#)**Gene Name**

CPT1C

Gene Alias

CATL1, CPT1P, CPTIC, FLJ23809

Gene Description

carnitine palmitoyltransferase 1C

Omim ID[608846](#)**Gene Ontology**[Hyperlink](#)**Other Designations**

CPT1-like pseudogene|carnitine acyltransferase-like protein 1|carnitine palmitoyltransferase I related C

Publication Reference

- [CPT1c is localized in endoplasmic reticulum of neurons and has carnitine palmitoyltransferase activity.](#)

Sierra AY, Gratacos E, Carrasco P, Clotet J, Urena J, Serra D, Asins G, Hegardt FG, Casals N.

The Journal of Biological Chemistry 2008 Mar; 283(11):6878.

Application: IF, IHC, WB-Ti, WB-Tr, Human, Mouse, Mouse brain, liver, muscle, kidney, pancreas, PC-12, HEK 293 cells

Pathway

- [Adipocytokine signaling pathway](#)
- [Fatty acid metabolism](#)
- [PPAR signaling pathway](#)

Disease

- [Cardiovascular Diseases](#)
- [Diabetes Mellitus](#)
- [Edema](#)