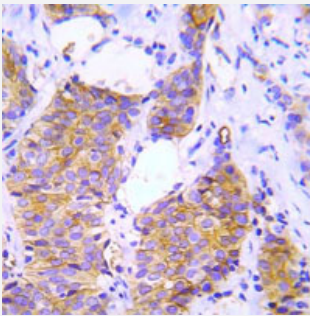


# Crk2 polyclonal antibody

Catalog # PAB17003      Size 100 ug

## Applications



### Immunohistochemistry (Formalin/PFA-fixed paraffin-embedded sections)

Immunohistochemical analysis of paraffin-embedded human lung adenocarcinoma tissue using Crk2 polyclonal antibody (Cat # PAB17003).

## Specification

<b>Product Description</b>	Rabbit polyclonal antibody raised against synthetic peptide of Crk2.
<b>Immunogen</b>	A synthetic peptide corresponding to residues surrounding Y221 of human Crk2.
<b>Host</b>	Rabbit
<b>Reactivity</b>	Human, Mouse, Rat
<b>Specificity</b>	This antibody detects endogenous levels of total Crk2 protein.
<b>Form</b>	Liquid
<b>Recommend Usage</b>	Western Blot (1:500-1:1000) Immunohistochemistry (1:50-1:100) ELISA (1:20000) The optimal working dilution should be determined by the end user.
<b>Storage Buffer</b>	In 20 mM PBS, 0.15 M NaCl, pH 7.2 (0.01% sodium azide)
<b>Storage Instruction</b>	Store at 4°C for three months. For long term storage store at -20°C. Aliquot to avoid repeated freezing and thawing.

**Note**

This product contains sodium azide: a POISONOUS AND HAZARDOUS SUBSTANCE which should be handled by trained staff only.

## Applications

- Western Blot
- Immunohistochemistry (Formalin/PFA-fixed paraffin-embedded sections)

Immunohistochemical analysis of paraffin-embedded human lung adenocarcinoma tissue using Crk2 polyclonal antibody (Cat # PAB17003).

- Enzyme-linked Immunoabsorbent Assay

## Publication Reference

- [Large-scale identification and evolution indexing of tyrosine phosphorylation sites from murine brain.](#)

Ballif BA, Carey GR, Sunyaev SR, Gygi SP.

Journal of Proteome Research 2008 Jan; 7(1):311.

- [The C-terminal SH3 domain of the mouse c-Crk protein negatively regulates tyrosine-phosphorylation of Crk associated p130 in rat 3Y1 cells.](#)

Ogawa S, Toyoshima H, Kozutsumi H, Hagiwara K, Sakai R, Tanaka T, Hirano N, Mano H, Yazaki Y, Hirai H.

Oncogene 1994 Jun; 9(6):1669.