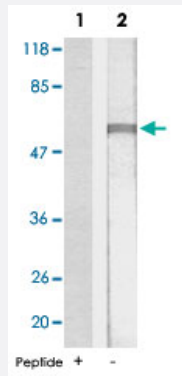


PPP2CB polyclonal antibody

Catalog # PAB16980 Size 100 ug

Applications



Western Blot (Cell lysate)

Western blot analysis of extracts from 293 cells using PPP2CB polyclonal antibody (Cat # PAB16980).

Specification

Product Description Rabbit polyclonal antibody raised against synthetic peptide of PPP2CB.

Immunogen A synthetic peptide corresponding to human PPP2CB.

Sequence KQLNENQVRTL

Host Rabbit

Reactivity Human, Mouse, Rat

Specificity This antibody detects endogenous levels of total PPP2CB protein.

Form Liquid

Recommend Usage Western Blot (1:500-1:1000)
The optimal working dilution should be determined by the end user.

Storage Buffer In 20 mM PBS, 0.15 M NaCl, pH 7.2 (0.01% sodium azide)

Storage Instruction Store at 4°C for three months. For long term storage store at -20°C.
Aliquot to avoid repeated freezing and thawing.

Note

This product contains sodium azide: a POISONOUS AND HAZARDOUS SUBSTANCE which should be handled by trained staff only.

Applications

- Western Blot (Cell lysate)

Western blot analysis of extracts from 293 cells using PPP2CB polyclonal antibody (Cat # PAB16980).

Gene Info — PPP2CB

Entrez GeneID [5516](#)

Protein Accession# [P62714](#)

Gene Name PPP2CB

Gene Alias PP2CB

Gene Description protein phosphatase 2 (formerly 2A), catalytic subunit, beta isoform

Omim ID [176916](#)

Gene Ontology [Hyperlink](#)

Gene Summary This gene encodes the phosphatase 2A catalytic subunit. Protein phosphatase 2A is one of the four major Ser/Thr phosphatases, and it is implicated in the negative control of cell growth and division. It consists of a common heteromeric core enzyme, which is composed of a catalytic subunit and a constant regulatory subunit, that associates with a variety of regulatory subunits. This gene encodes a beta isoform of the catalytic subunit. Two transcript variants encoding the same protein have been identified for this gene. [provided by RefSeq]

Other Designations PP2A-beta|protein phosphatase 2, catalytic subunit, beta isoform|protein phosphatase type 2A catalytic subunit|serine/threonine protein phosphatase 2A, catalytic subunit, beta isoform

Publication Reference

- [Protein phosphatase 2A: a highly regulated family of serine/threonine phosphatases implicated in cell growth and signalling.](#)

Janssens V, Goris J.

The Biochemical Journal 2001 Feb; 353(Pt 3):417.

- [Methylation of the protein phosphatase 2A catalytic subunit is essential for association of Balpha regulatory subunit but not SG2NA, striatin, or polyomavirus middle tumor antigen.](#)

Yu XX, Du X, Moreno CS, Green RE, Ogris E, Feng Q, Chou L, McQuoid MJ, Pallas DC.

Molecular Biology of the Cell 2001 Jan; 12(1):185.

- [Carboxyl methylation regulates phosphoprotein phosphatase 2A by controlling the association of regulatory B subunits.](#)

Tolstykh T, Lee J, Vafai S, Stock JB.

The EMBO Journal 2000 Nov; 19(21):5682.

Application: WB, Bovine, Bovine brain extracts

Pathway

- [Long-term depression](#)
- [TGF-beta signaling pathway](#)
- [Tight junction](#)
- [Wnt signaling pathway](#)