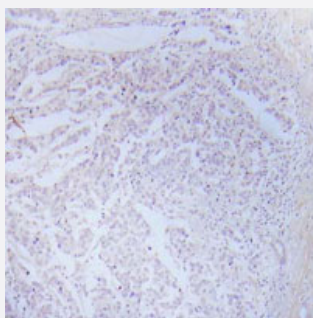


# IKK-alpha/beta (phospho S176) polyclonal antibody

Catalog # PAB16976      Size 100 ug

## Applications



### Immunohistochemistry (Formalin/PFA-fixed paraffin-embedded sections)

Immunohistochemical analysis of paraffin-embedded human breast carcinoma tissue using IKK $\alpha$ /IKK $\beta$  (phospho Ser176) polyclonal antibody (Cat # PAB16976).

## Specification

<b>Product Description</b>	Rabbit polyclonal antibody raised against synthetic phosphopeptide of IKK-alpha/beta.
<b>Immunogen</b>	Synthetic phosphopeptide corresponding to residues surrounding S176 of human IKK-alpha/beta.
<b>Host</b>	Rabbit
<b>Reactivity</b>	Human, Mouse, Rat
<b>Specificity</b>	This antibody detects endogenous levels of IKK-alpha/IKK-beta only when phosphorylated at serine 180/181.
<b>Form</b>	Liquid
<b>Recommend Usage</b>	Western Blot (1:500-1:1000) Immunohistochemistry (1:50-1:100) ELISA (1:4000) The optimal working dilution should be determined by the end user.
<b>Storage Buffer</b>	In 20 mM PBS, 0.15 M NaCl, pH 7.2 (0.01% sodium azide)
<b>Storage Instruction</b>	Store at 4°C for three months. For long term storage store at -20°C. Aliquot to avoid repeated freezing and thawing.

**Note**

This product contains sodium azide: a POISONOUS AND HAZARDOUS SUBSTANCE which should be handled by trained staff only.

## Applications

- Western Blot
- Immunohistochemistry (Formalin/PFA-fixed paraffin-embedded sections)

Immunohistochemical analysis of paraffin-embedded human breast carcinoma tissue using IKK $\alpha$ /IKK $\beta$  (phospho Ser176) polyclonal antibody (Cat # PAB16976).

- Enzyme-linked Immunoabsorbent Assay

## Publication Reference

- [Proteasome inhibitors induce death but activate NF-kappaB on endometrial carcinoma cell lines and primary culture explants.](#)

Dolcet X, Llobet D, Encinas M, Pallares J, Cabero A, Schoenenberger JA, Comella JX, Matias-Guiu X.

The Journal of Biological Chemistry 2006 May; 281(31):22118.

- [NF-kappaB-inducing kinase activates IKK-alpha by phosphorylation of Ser-176.](#)

Ling L, Cao Z, Goeddel DV.

PNAS 1998 Mar; 95(7):3792.

Application: WB-Tr, Human, HEK 293, HeLa cells

- [IKK-1 and IKK-2: cytokine-activated IkappaB kinases essential for NF-kappaB activation.](#)

Mercurio F, Zhu H, Murray BW, Shevchenko A, Bennett BL, Li J, Young DB, Barbosa M, Mann M, Manning A, Rao A.

Science 1997 Oct; 278(5339):860.