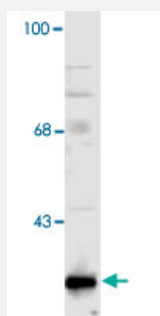


Gstk1 polyclonal antibody

Catalog # PAB16936 Size 100 uL

Applications



Western Blot (Tissue lysate)

Western blot of mouse adipose tissue showing specific immunolabeling of the ~25k Gstk1 protein.

Specification

Product Description	Rabbit polyclonal antibody raised against full length recombinant Gstk1.
Immunogen	Recombinant protein corresponding to full length mouse Gstk1.
Host	Rabbit
Theoretical MW (kDa)	25
Reactivity	Human, Mouse
Specificity	This antibody has been directly tested for reactivity in mouse and human. specific to the ~25 KDa Ds bA-L protein in Western blots of 3T3-L1 adipocytes and mouse white and brown adipose tissue lysat e samples. It is suggested that add 1% BSA to This antibody dilution buffer.
Form	Liquid
Recommend Usage	Western Blot (1:2000) Immunohistochemistry (1:200) The optimal working dilution should be determined by the end user.
Storage Buffer	In serum

Storage Instruction

Store at -20°C.
Aliquot to avoid repeated freezing and thawing.

Applications

- Western Blot (Tissue lysate)

Western blot of mouse adipose tissue showing specific immunolabeling of the ~ 25k Gstk1 protein.

- Immunohistochemistry

Gene Info — Gstk1

Entrez GeneID	76263
Gene Name	Gstk1
Gene Alias	0610025I19Rik, AW260476
Gene Description	glutathione S-transferase kappa 1
Gene Ontology	Hyperlink
Gene Summary	source key:Q9Y2Q3
Other Designations	data source:SPTR, source key:Q9Y2Q3, evidence:ISS~homolog to GLUTATHIONE S-TRANSFERENCE, MITOCHONDRIAL (EC 2.5.1.18) (GST 13-13) (GLUTATHIONE S-TRANSFERASE SUB UNIT 13) (GST CLASS-KAPPA) (HDCMD47P)~putative glutathione S-transferase class kappa

Publication Reference

- [Polymorphism of DsbA-L gene associates with insulin secretion and body fat distribution in Chinese population.](#)

Gao F, Fang Q, Zhang R, Lu J, Lu H, Wang C, Ma X, Xu J, Jia W, Xiang K.

Endocrine Journal 2009 Feb; 56(3):487.

- [A disulfide-bond A oxidoreductase-like protein \(DsbA-L\) regulates adiponectin multimerization.](#)

Liu M, Zhou L, Xu A, Lam KS, Wetzel MD, Xiang R, Zhang J, Xin X, Dong LQ, Liu F.

PNAS 2008 Nov; 105(47):18302.

Application: IP-WB, WB-Ti, Mouse, Mouse Brain, Fat, Heart, Hypothalamus, Kidney, Liver, Lung, Pancreas, Skeletal muscle, NIH/3T3 cells