

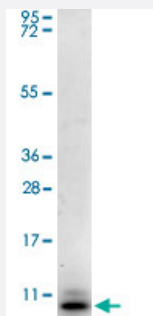
# Ccl20 polyclonal antibody

Catalog # PAB16930

Size 100 ug

## Applications

### Western Blot (Recombinant protein)



Western blot using Ccl20 polyclonal antibody (Cat # PAB16930) shows detection of a band ~11 KDa in size corresponding to recombinant mouse Ccl20. Recombinant mouse Ccl20 was loaded on to an SDS-PAGE gel at 0.25 ug and after separation was transferred to nitrocellulose. The membrane was blocked with 1% BSA in TBST for 30 min at RT, followed by incubation with primary antibody diluted 1 : 1,000 in 1% BSA in TBST overnight at 4°C. After washes, the blot was reacted with secondary antibody HRP Goat anti-Rabbit IgG antibody diluted 1 : 40,000 in blocking buffer for 30 min at RT followed by reaction with FemtoMax™ Chemiluminescent substrate. Data was collected using Bio-Rad VersaDoc® 4000 MP imaging system.

## Specification

**Product Description** Rabbit polyclonal antibody raised against full length recombinant Ccl20.

**Immunogen** Recombinant protein corresponding to full length mouse Ccl20.

**Host** Rabbit

**Reactivity** Mouse, Rat

**Form** Lyophilized

**Recommend Usage** ELISA (1:10000)  
Western Blot (1:1000)  
The optimal working dilution should be determined by the end user.

**Storage Buffer** Lyophilized from 20 mM KH<sub>2</sub>PO<sub>4</sub>, 150 mM NaCl, pH 7.2

**Storage Instruction**

Store at 4°C on dry atmosphere.  
After reconstitution with 0.1 mL of deionized water, store at -20°C or lower.  
Aliquot to avoid repeated freezing and thawing.

**Applications**

- Western Blot (Recombinant protein)

Western blot using Ccl20 polyclonal antibody (Cat # PAB16930) shows detection of a band ~11 KDa in size corresponding to recombinant mouse Ccl20. Recombinant mouse Ccl20 was loaded on to an SDS-PAGE gel at 0.25 ug and after separation was transferred to nitrocellulose. The membrane was blocked with 1% BSA in TBST for 30 min at RT, followed by incubation with primary antibody diluted 1 : 1,000 in 1% BSA in TBST overnight at 4°C. After washes, the blot was reacted with secondary antibody HRP Goat anti-Rabbit IgG antibody diluted 1 : 40,000 in blocking buffer for 30 min at RT followed by reaction with FemtoMax™ Chemiluminescent substrate. Data was collected using Bio-Rad VersaDoc® 4000 MP imaging system.

- Enzyme-linked Immunoabsorbent Assay

**Gene Info — Ccl20**

Entrez GeneID	<a href="#">20297</a>
Gene Name	Ccl20
Gene Alias	CKb4, LARC, MIP-3A, MIP-3[a], MIP3A, ST38, Scya20, exodus-1
Gene Description	chemokine (C-C motif) ligand 20
Gene Ontology	<a href="#">Hyperlink</a>
Other Designations	OTTMUSP00000017965 small inducible cytokine subfamily A20

**Publication Reference**

- [C-C chemokine receptor 6-regulated entry of TH-17 cells into the CNS through the choroid plexus is required for the initiation of EAE.](#)

Reboldi A, Coisne C, Baumjohann D, Benvenuto F, Bottinelli D, Lira S, Uccelli A, Lanzavecchia A, Engelhardt B, Sallusto F.  
Nature Immunology 2009 Mar; 10(5):514.

- [Toll-like receptor 5- and lymphotoxin beta receptor-dependent epithelial Ccl20 expression involves the same NF-kappaB binding site but distinct NF-kappaB pathways and dynamics.](#)

Sirard JC, Didierlaurent A, Cayet D, Sierro F, Rumbo M.

Biochimica et Biophysica Acta 2009 Mar; 1789(5):386.

- [Th17 cytokines stimulate CCL20 expression in keratinocytes in vitro and in vivo: implications for psoriasis pathogenesis.](#)

Harper EG, Guo C, Rizzo H, Lillis JV, Kurtz SE, Skorcheva I, Purdy D, Fitch E, Iordanov M, Blauvelt A.

The Journal of Investigative Dermatology 2009 Mar; 129(9):2175.