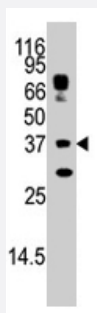


STUB1 polyclonal antibody

Catalog # PAB1693

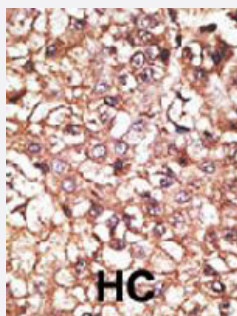
Size 400 uL

Applications



Western Blot (Cell lysate)

The STUB1 polyclonal antibody (Cat # PAB1693) is used in Western blot to detect STUB1 in HepG2 cell lysate.



Immunohistochemistry (Formalin/PFA-fixed paraffin-embedded sections)

Formalin-fixed and paraffin-embedded human hepatocellular carcinoma tissue reacted with STUB1 polyclonal antibody (Cat # PAB1693), which was peroxidase-conjugated to the secondary antibody, followed by AEC staining. This data demonstrates the use of this antibody for immunohistochemistry; clinical relevance has not been evaluated. HC = hepatocarcinoma.

Specification

Product Description	Rabbit polyclonal antibody raised against synthetic peptide of STUB1.
Immunogen	A synthetic peptide (conjugated with KLH) corresponding to amino acids 160-190 at C-terminus of human STUB1.
Host	Rabbit
Reactivity	Human
Form	Liquid
Purification	Ammonium sulfate precipitation

Recommend Usage	Western Blot (1:1000) Immunohistochemistry (1:50-100) The optimal working dilution should be determined by the end user.
Storage Buffer	In PBS (0.09% sodium azide)
Storage Instruction	Store at 4°C. For long term storage store at -20°C. Aliquot to avoid repeated freezing and thawing.
Note	This product contains sodium azide: a POISONOUS AND HAZARDOUS SUBSTANCE which should be handled by trained staff only.

Applications

- Western Blot (Cell lysate)

The STUB1 polyclonal antibody (Cat # PAB1693) is used in Western blot to detect STUB1 in HepG2 cell lysate.

- Immunohistochemistry (Formalin/PFA-fixed paraffin-embedded sections)

Formalin-fixed and paraffin-embedded human hepatocellular carcinoma tissue reacted with STUB1 polyclonal antibody (Cat # PAB1693), which was peroxidase-conjugated to the secondary antibody, followed by AEC staining. This data demonstrates the use of this antibody for immunohistochemistry; clinical relevance has not been evaluated. HC = hepatocarcinoma.

Gene Info — STUB1

Entrez GeneID	10273
Protein Accession#	Q969U2
Gene Name	STUB1
Gene Alias	CHIP, HSPABP2, NY-CO-7, SDCCAG7, UBOX1
Gene Description	STIP1 homology and U-box containing protein 1
Omim ID	607207
Gene Ontology	Hyperlink
Gene Summary	STUB1, or CHIP, is a ubiquitin ligase/cochaperone that participates in protein quality control by targeting a broad range of chaperone protein substrates for degradation (Min et al., 2008 [PubMed 18411298]).[supplied by OMIM]
Other Designations	heat shock protein A binding protein 2 (c-terminal) serologically defined colon cancer antigen 7

Publication Reference

- [Ubiquitylation of neuronal nitric-oxide synthase by CHIP, a chaperone-dependent E3 ligase.](#)

Peng HM, Morishima Y, Jenkins GJ, Dunbar AY, Lau M, Patterson C, Pratt WB, Osawa Y.

The Journal of Biological Chemistry 2004 Dec; 279(51):52970.

Application: WB-Tr, Human, Monkey, COS-7, HEK 293T cells

- [Large-scale characterization of HeLa cell nuclear phosphoproteins.](#)

Beausoleil SA, Jedrychowski M, Schwartz D, Elias JE, Villen J, Li J, Cohn MA, Cantley LC, Gygi SP.

PNAS 2004 Aug; 101(33):12130.

- [The cochaperone HspBP1 inhibits the CHIP ubiquitin ligase and stimulates the maturation of the cystic fibrosis transmembrane conductance regulator.](#)

Alberti S, Bohse K, Arndt V, Schmitz A, Hohfeld J.

Molecular Biology of the Cell 2004 Jun; 15(9):4003.

Pathway

- [Ubiquitin mediated proteolysis](#)