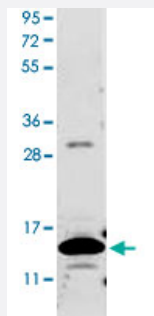


# Csf2 polyclonal antibody

Catalog # PAB16927      Size 100 ug

## Applications



### Western Blot (Recombinant protein)

Western blot using Csf2 polyclonal antibody (Cat # PAB16927) shows detection of a band ~14 kDa in size corresponding to recombinant mouse Csf2. After transfer, the membrane was blocked overnight with 3% BSA in TBS followed by reaction with primary antibody at a 1 : 1,000 dilution. Detection occurred using DyLight™649 conjugated anti-Rabbit IgG secondary antibody diluted 1 : 20,000 in blocking buffer. Image was captured using VersaDoc MP 4000 imaging system (Bio-Rad).

## Specification

**Product Description** Rabbit polyclonal antibody raised against full length recombinant Csf2.

**Immunogen** Recombinant protein corresponding to full length mouse Csf2.

**Host** Rabbit

**Reactivity** Mouse

**Form** Lyophilized

**Recommend Usage** ELISA (1:1000-1:5000)  
Western Blot (1:500-1:2000)  
The optimal working dilution should be determined by the end user.

**Storage Buffer** Lyophilized from 20 mM KH<sub>2</sub>PO<sub>4</sub>, 150 mM NaCl, pH 7.2

**Storage Instruction** Store at 4°C on dry atmosphere.  
After reconstitution with 0.1 mL of deionized water, store at -20°C or lower.  
Aliquot to avoid repeated freezing and thawing.

## Applications

- Western Blot (Recombinant protein)

Western blot using Csf2 polyclonal antibody (Cat # PAB16927) shows detection of a band ~14 KDa in size corresponding to recombinant mouse Csf2. After transfer, the membrane was blocked overnight with 3% BSA in TBS followed by reaction with primary antibody at a 1 : 1,000 dilution. Detection occurred using DyLight™649 conjugated anti-Rabbit IgG secondary antibody diluted 1 : 20,000 in blocking buffer. Image was captured using VersaDoc MP 4000 imaging system (Bio-Rad).

- Enzyme-linked Immunoabsorbent Assay

## Gene Info — Csf2

Entrez GeneID	<a href="#">12981</a>
Gene Name	Csf2
Gene Alias	Csfgm, Gm-CSf, MGC151255, MGC151257, MGI-IGM
Gene Description	colony stimulating factor 2 (granulocyte-macrophage)
Gene Ontology	<a href="#">Hyperlink</a>
Other Designations	OTTMUSP00000005830 colony stimulating factor 2 granulocyte-macrophage colony stimulating factor 2 put. GM-CSF

## Publication Reference

- [Structure of the chromosomal gene for granulocyte-macrophage colony stimulating factor: comparison of the mouse and human genes.](#)  
Miyatake S, Otsuka T, Yokota T, Lee F, Arai K.  
The EMBO Journal 1985 Oct; 4(10):2561.
- [The structure and expression of the murine gene encoding granulocyte-macrophage colony stimulating factor: evidence for utilisation of alternative promoters.](#)  
Stanley E, Metcalf D, Sobieszczuk P, Gough NM, Dunn AR.  
The EMBO Journal 1985 Oct; 4(10):2569.

- [Recombinant murine GM-CSF from E. coli has biological activity and is neutralized by a specific antiserum.](#)

DeLamarter JF, Mermod JJ, Liang CM, Eliason JF, Thatcher DR.

The EMBO Journal 1985 Oct; 4(10):2575.

Application: ELISA, IP, Neutralization, RIA, Mouse, FDC-P1 cells, Recombinant proteins