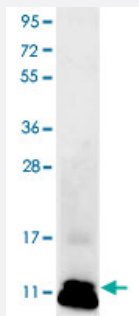


CCL2 polyclonal antibody

Catalog # PAB16914 Size 100 ug

Applications



Western Blot (Recombinant protein)

Western blot using CCL2 polyclonal antibody (Cat # PAB16914) shows detection of recombinant bovine CCL2 at 8.8 KDa (arrow) raised in yeast. Protein was purified and resolved by SDS-PAGE, then transferred to PVDF membrane. Membrane was blocked with 3% BSA (BSA-30, diluted 1 : 10), and probed with CCL2 polyclonal antibody. After washing, membrane was probed with Dylight™ 649 Conjugated Anti-Rabbit IgG (H&L) (Donkey) Antibody.

Specification

Product Description	Rabbit polyclonal antibody raised against full length recombinant CCL2.
Immunogen	Recombinant protein corresponding to 76 amino acids of bovine CCL2.
Host	Rabbit
Reactivity	Bovine
Form	Lyophilized
Recommend Usage	ELISA (1:4500) Western Blot (1 ug/mL) The optimal working dilution should be determined by the end user.
Storage Buffer	Lyophilized from 20 mM KH ₂ PO ₄ , 150 mM NaCl, pH 7.2 (0.01% sodium azide)
Storage Instruction	Store at 4°C on dry atmosphere. After reconstitution with 0.1 mL of deionized water, store at -20°C or lower. Aliquot to avoid repeated freezing and thawing.
Note	This product contains sodium azide: a POISONOUS AND HAZARDOUS SUBSTANCE which should be handled by trained staff only.

Applications

- Western Blot (Recombinant protein)

Western blot using CCL2 polyclonal antibody (Cat # PAB16914) shows detection of recombinant bovine CCL2 at 8.8 KDa (arrow) raised in yeast. Protein was purified and resolved by SDS-PAGE, then transferred to PVDF membrane. Membrane was blocked with 3% BSA (BSA-30, diluted 1 : 10), and probed with CCL2 polyclonal antibody. After washing, membrane was probed with Dylight™ 649 Conjugated Anti-Rabbit IgG (H&L) (Donkey) Antibody.

- Enzyme-linked Immunoabsorbent Assay

Gene Info — CCL2

Entrez GeneID	281043
Gene Name	CCL2
Gene Alias	SCYA2
Gene Description	chemokine (C-C motif) ligand 2
Gene Ontology	Hyperlink
Other Designations	monocyte chemoattractant protein 1 small inducible cytokine A2 (monocyte chemotactic protein 1)

Publication Reference

- [Short communication: Localization and expression of monocyte chemoattractant protein-1 in different subcutaneous and visceral adipose tissues of early-lactating dairy cows.](#)

Haussler S, Sacre C, Friedauer K, Danicke S, Sauerwein H.

Journal of Dairy Science 2015 Sep; 98(9):6278.

Application: IHC, Cow, Adipose tissue

- [CCL2 \(Monocyte Chemoattractant Protein-1\) in cancer bone metastases.](#)

Craig MJ, Loberg RD.

Cancer Metastasis Reviews 2006 Dec; 25(4):611.

Application: ELISA, Human, C4-2B, LNCaP, PC-3, VCaP cells, Human colorectal carcinoma, Normal mucosa

- [Cooperative expression of monocyte chemoattractant protein 1 within the bovine corpus luteum: evidence of immune cell-endothelial cell interactions in a coculture system.](#)

Liptak AR, Sullivan BT, Henkes LE, Wijayagunawardane MP, Miyamoto A, Davis JS, Rueda BR, Townson DH.

Biology of Reproduction 2005 May; 72(5):1169.

Application: ELISA, Bovine, Culture medium from endothelial, peripheral blood mononuclear cells

- [Human recombinant monocyte chemotactic protein and other C-C chemokines bind and induce directional migration of dendritic cells in vitro.](#)

Xu LL, Warren MK, Rose WL, Gong W, Wang JM.

Journal of Leukocyte Biology 1996 Sep; 60(3):365.