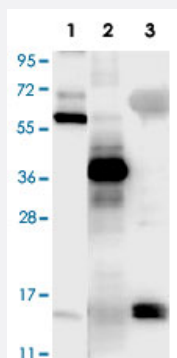


Gdf15 polyclonal antibody

Catalog # PAB16912 Size 100 ug

Applications

Western Blot



Western blot using Gdf15 polyclonal antibody (Cat # PAB16912).

Lane 1, recombinant MBP-Gdf15 fusion protein (60 KDa) purified from E.coli.

Lane 2, yeast cell lysate expressing SUMO-mouse Gdf15 (42 KDa).

Lane 3, R&D human Gdf15 monomer purified from CHO-K1 cells (14 KDa).

All lysates were run under reducing conditions. Primary antibody was used at a 1 : 1000 dilution in TBS containing 1% BSA and 0.2% Tween, and reacted overnight at 4°C. Gdf15 was detected using a 1 : 40,000 dilution of peroxidase conjugated Gt-a-Rabbit antibody in Blocking Buffer for Fluorescent Western Blotting for 30 min at room temperature. Molecular weight estimation was made by comparison to prestained MW markers. Image was captured using the BioRad Versadoc™4000MP Imaging System.

Specification

Product Description Rabbit polyclonal antibody raised against synthetic peptide of Gdf15.

Immunogen A synthetic peptide corresponding to C-terminus of mouse Gdf15 .

Host Rabbit

Reactivity Human, Mouse

Form Liquid

Recommend Usage
ELISA (1:100000-1:120000)
Western Blot (1:3000-1:7000)
The optimal working dilution should be determined by the end user.

Storage Buffer In 20 mM KH₂PO₄, 150 mM NaCl, pH 7.2 (0.01% sodium azide)

Storage Instruction

Store at 4°C. For long term storage store at -20°C.
Aliquot to avoid repeated freezing and thawing.

Note

This product contains sodium azide: a POISONOUS AND HAZARDOUS SUBSTANCE which should be handled by trained staff only.

Applications

- Western Blot

Western blot using Gdf15 polyclonal antibody (Cat # PAB16912).

Lane 1, recombinant MBP-Gdf15 fusion protein (60 KDa) purified from E.coli.

Lane 2, yeast cell lysate expressing SUMO-mouse Gdf15 (42 KDa).

Lane 3, R&D human Gdf15 monomer purified from CHO-K1 cells (14 KDa).

All lysates were run under reducing conditions. Primary antibody was used at a 1 : 1000 dilution in TBS containing 1% BSA and 0.2% Tween, and reacted overnight at 4°C. Gdf15 was detected using a 1 : 40,000 dilution of peroxidase conjugated Gt-a-Rabbit antibody in Blocking Buffer for Fluorescent Western Blotting for 30 min at room temperature. Molecular weight estimation was made by comparison to prestained MW markers. Image was captured using the BioRad Versadoc™4000MP Imaging System.

- Enzyme-linked Immunoabsorbent Assay

Gene Info — Gdf15

Entrez GeneID[23886](#)**Gene Name**

Gdf15

Gene Alias

MIC-1, NAG-1, SBF

Gene Description

growth differentiation factor 15

Gene Ontology[Hyperlink](#)**Other Designations**

Growth/differentiation factor 15 precursor (GDF-15)|OTTMUSP00000027988|OTTMUSP00000027989|macrophage inhibiting cytokine-1

Publication Reference

- [Changes in gene expression contribute to cancer prevention by COX inhibitors.](#)

Baek SJ, Eling TE.

Progress in Lipid Research 2005 Nov; 45(1):1.

- [H6D polymorphism in macrophage-inhibitory cytokine-1 gene associated with prostate cancer.](#)

Lindmark F, Zheng SL, Wiklund F, Bensen J, Balter KA, Chang B, Hedelin M, Clark J, Stattin P, Meyers DA, Adami HO, Isaacs W, Gronberg H, Xu J.

Journal of the National Cancer Institute 2004 Aug; 96(16):1248.