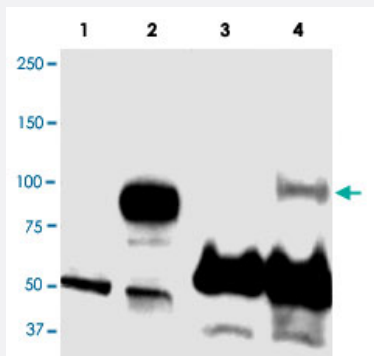


# PRDM1 polyclonal antibody

Catalog # PAB16909      Size 100 ug

## Applications

### Western Blot



Western blots using PRDM1 polyclonal antibody (Cat # PAB16909) show detection of overexpressed PRDM1 in whole transfected Raji cell lysate (Lane 2) at ~88kDa. Lane 1 shows mock transfection in whole Raji cell lysate. Detection of endogenous PRDM1 (Lane 4) is illustrated in human plasma cell nuclear extract, but not in Raji whole cell nuclear extract (Lane 3). The identity of the lower dark band at ~50-60kDa is unknown. Primary antibody was used at a 1 : 1000 dilution in 5% PBS-Tween.

Personal communication, Hyesuk Yoon and Jerry Boss, Emory University, Atlanta, GA.

## Specification

**Product Description** Rabbit polyclonal antibody raised against synthetic peptide of PRDM1.

**Immunogen** A synthetic peptide corresponding to C-terminus of human PRDM1 .

**Host** Rabbit

**Reactivity** Dog, Human, Mouse, Rat

**Form** Liquid

**Recommend Usage** ELISA (1:65000-1:80000)  
Western Blot (1:1000)  
The optimal working dilution should be determined by the end user.

**Storage Buffer** In 20 mM KH<sub>2</sub>PO<sub>4</sub>, 150 mM NaCl, pH 7.2 (0.01% sodium azide)

**Storage Instruction** Store at 4°C. For long term storage store at -20°C.  
Aliquot to avoid repeated freezing and thawing.

**Note**

This product contains sodium azide: a POISONOUS AND HAZARDOUS SUBSTANCE which should be handled by trained staff only.

## Applications

- Western Blot

Western blots using PRDM1 polyclonal antibody (Cat # PAB16909) show detection of overexpressed PRDM1 in whole transfected Raji cell lysate (Lane 2) at ~88kDa. Lane 1 shows mock transfection in whole Raji cell lysate. Detection of endogenous PRDM1 (Lane 4) is illustrated in human plasma cell nuclear extract, but not in Raji whole cell nuclear extract (Lane 3). The identity of the lower dark band at ~50-60kDa is unknown. Primary antibody was used at a 1 : 1000 dilution in 5% PBS-Tween.

Personal communication, Hyesuk Yoon and Jerry Boss, Emory University, Atlanta, GA.

- Enzyme-linked Immunoabsorbent Assay

## Gene Info — PRDM1

Entrez GeneID	<a href="#">639</a>
---------------	---------------------

Gene Name	PRDM1
-----------	-------

Gene Alias	BLIMP1, MGC118922, MGC118923, MGC118924, MGC118925, PRDI-BF1
------------	--

Gene Description	PR domain containing 1, with ZNF domain
------------------	---

Omim ID	<a href="#">603423</a>
---------	------------------------

Gene Ontology	<a href="#">Hyperlink</a>
---------------	---------------------------

Gene Summary	This gene encodes a protein that acts as a repressor of beta-interferon gene expression. The protein binds specifically to the PRDI (positive regulatory domain I element) of the beta-IFN gene promoter. Transcription of this gene increases upon virus induction. Two alternatively spliced transcript variants that encode different isoforms have been reported. [provided by RefSeq]
--------------	--

Other Designations	B-lymphocyte-induced maturation protein 1 OTTHUMP00000016918 PR-domain zinc finger protein 1 PRDI-binding factor-1 beta-interferon gene positive-regulatory domain I binding factor positive regulatory domain I-binding factor 1
--------------------	---

## Publication Reference

- [MTA3 and the Mi-2/NuRD complex regulate cell fate during B lymphocyte differentiation.](#)

Fujita N, Jaye DL, Geigerman C, Akyildiz A, Mooney MR, Boss JM, Wade PA.

Cell 2004 Oct; 119(1):75.

- [Kinetics of a gamma interferon response: expression and assembly of CIITA promoter IV and inhibition by methylation.](#)

Morris AC, Beresford GW, Mooney MR, Boss JM.

Molecular and Cellular Biology 2002 Jul; 22(13):4781.

- [Expression of transcription factors Pu.1, Spi-B, Blimp-1, BSAP and oct-2 in normal human plasma cells and in multiple myeloma cells.](#)

Nagy M, Chapuis B, Matthes T.

British Journal of Haematology 2002 Feb; 116(2):429.

## Disease

- [Arthritis](#)
- [Crohn Disease](#)
- [Genetic Predisposition to Disease](#)
- [IgA Deficiency](#)
- [Inflammatory Bowel Diseases](#)
- [Kidney Failure](#)
- [Lupus Erythematosus](#)
- [Tobacco Use Disorder](#)