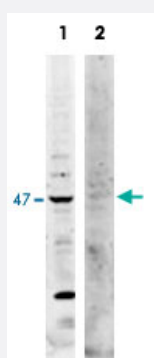


# TRAF2 polyclonal antibody

Catalog # PAB16905      Size 100 ug

## Applications

### Western Blot (Cell lysate)



Western blot using TRAF2 polyclonal antibody (Cat # PAB16905) shows detection of endogenous TRAF2 in whole HeLa cell lysates. Lane 1 shows endogenous TRAF2 detected with antibody at 47 KDa (arrowhead). Lane 2 shows no reactivity when blot is incubated with immunizing peptide. The identity of lower molecular weight band in lane 1 is unknown. Briefly, each lane contains approximately 14 ug of lysate. Membranes were blocked in 3% BSA-TBS 30 min. at room temperature. Primary antibody was used at a 1 : 500 dilution in 3% BSA-TBS and reacted overnight at 4°C. The membrane was washed and reacted with a 1 : 20,000 dilution conjugated Gt-a-Rabbit DyLight 649 for 1 hr at room temperature. Fluorescence image was captured using the VersaDoc® Imaging System developed by Bio-Rad.

## Specification

<b>Product Description</b>	Rabbit polyclonal antibody raised against synthetic peptide of TRAF2.
<b>Immunogen</b>	A synthetic peptide corresponding to internal region of human TRAF2 .
<b>Host</b>	Rabbit
<b>Reactivity</b>	Human, Mouse
<b>Form</b>	Liquid
<b>Recommend Usage</b>	ELISA (1:60000-1:250000) Western Blot (1 ug/mL) The optimal working dilution should be determined by the end user.
<b>Storage Buffer</b>	In 20 mM KH <sub>2</sub> PO <sub>4</sub> , 150 mM NaCl, pH 7.2 (0.01% sodium azide)

**Storage Instruction**

Store at 4°C. For long term storage store at -20°C.  
Aliquot to avoid repeated freezing and thawing.

**Note**

This product contains sodium azide: a POISONOUS AND HAZARDOUS SUBSTANCE which should be handled by trained staff only.

## Applications

- Western Blot (Cell lysate)

Western blot using TRAF2 polyclonal antibody (Cat # PAB16905) shows detection of endogenous TRAF2 in whole HeLa cell lysates. Lane 1 shows endogenous TRAF2 detected with antibody at 47 KDa (arrowhead). Lane 2 shows no reactivity when blot is incubated with immunizing peptide. The identity of lower molecular weight band in lane 1 is unknown. Briefly, each lane contains approximately 14 ug of lysate. Membranes were blocked in 3% BSA-TBS 30 min. at room temperature. Primary antibody was used at a 1 : 500 dilution in 3% BSA-TBS and reacted overnight at 4°C. The membrane was washed and reacted with a 1 : 20,000 dilution conjugated Gt-a-Rabbit DyLight 649 for 1 hr at room temperature. Fluorescence image was captured using the VersaDoc® Imaging System developed by Bio-Rad.

- Immunofluorescence

- Enzyme-linked Immunoabsorbent Assay

## Gene Info — TRAF2

**Entrez GeneID**[7186](#)**Gene Name**

TRAF2

**Gene Alias**

MGC:45012, TRAP, TRAP3

**Gene Description**

TNF receptor-associated factor 2

**Omim ID**[601895](#)**Gene Ontology**[Hyperlink](#)

**Gene Summary**

The protein encoded by this gene is a member of the TNF receptor associated factor (TRAF) protein family. TRAF proteins associate with, and mediate the signal transduction from members of the TNF receptor superfamily. This protein directly interacts with TNF receptors, and forms a heterodimeric complex with TRAF1. This protein is required for TNF-alpha-mediated activation of MAPK8/JNK and NF-kappaB. The protein complex formed by this protein and TRAF1 interacts with the inhibitor-of-apoptosis proteins (IAPs), and functions as a mediator of the anti-apoptotic signals from TNF receptors. The interaction of this protein with TRADD, a TNF receptor associated apoptotic signal transducer, ensures the recruitment of IAPs for the direct inhibition of caspase activation. BIRC2/c-IAP1, an apoptosis inhibitor possessing ubiquitin ligase activity, can ubiquitinate and induce the degradation of this protein, and thus potentiate TNF-induced apoptosis. Multiple alternatively spliced transcript variants have been found for this gene, but the biological validity of only one transcript has been determined. [provided by RefSeq]

**Other Designations**

OTTHUMP00000022625|OTTHUMP00000064745|tumor necrosis factor type 2 receptor associated protein 3

**Publication Reference**

- [RNAi screen in mouse astrocytes identifies phosphatases that regulate NF-kappaB signaling.](#)

Li S, Wang L, Berman MA, Zhang Y, Dorf ME.

Molecular Cell 2006 Nov; 24(4):497.

Application: IP, WB-Tr, Mouse, Mouse astrocytes

**Pathway**

- [Adipocytokine signaling pathway](#)
- [Apoptosis](#)
- [MAPK signaling pathway](#)
- [Pathways in cancer](#)
- [Small cell lung cancer](#)

**Disease**

- [Alzheimer disease](#)
- [Cardiovascular Diseases](#)
- [Connective Tissue Diseases](#)

- [Diabetes Complications](#)
- [Diabetes Mellitus](#)
- [Ductus Arteriosus](#)
- [Edema](#)
- [Fetal Diseases](#)
- [Genetic Predisposition to Disease](#)
- [Hematologic Diseases](#)
- [HIV Infections](#)
- [Hodgkin Disease](#)
- [Infant](#)
- [Infection](#)
- [Inflammation](#)
- [Lymphoma](#)
- [Lymphoproliferative Disorders](#)
- [Metabolic Syndrome X](#)
- [Multiple Myeloma](#)
- [Musculoskeletal Diseases](#)
- [Neoplasms](#)
- [Occupational Diseases](#)
- [Osteoporosis](#)
- [Pregnancy Complications](#)
- [Premature Birth](#)
- [Retinopathy of Prematurity](#)
- [Skin Diseases](#)
- [Waldenstrom Macroglobulinemia](#)
- [Werner syndrome](#)