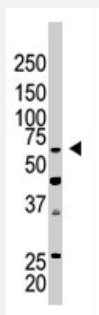


CBX4 polyclonal antibody

Catalog # PAB1690

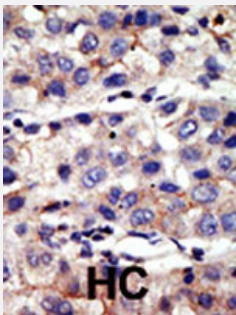
Size 400 uL

Applications



Western Blot (Tissue lysate)

The CBX4 polyclonal antibody (Cat # PAB1690) is used in Western blot to detect CBX4 in mouse kidney tissue lysate.



Immunohistochemistry (Formalin/PFA-fixed paraffin-embedded sections)

Formalin-fixed and paraffin-embedded human hepatocellular carcinoma tissue reacted with CBX4 polyclonal antibody (Cat # PAB1690) , which was peroxidase-conjugated to the secondary antibody, followed by AEC staining. This data demonstrates the use of this antibody for immunohistochemistry; clinical relevance has not been evaluated. HC = hepatocarcinoma.

Specification

Product Description	Rabbit polyclonal antibody raised against synthetic peptide of CBX4.
Immunogen	A synthetic peptide (conjugated with KLH) corresponding to N-terminus of human CBX4.
Host	Rabbit
Reactivity	Human, Mouse
Form	Liquid
Purification	Protein G purification

Recommend Usage	Western Blot (1:1000) Immunohistochemistry (1:50-100) The optimal working dilution should be determined by the end user.
Storage Buffer	In PBS (0.09% sodium azide)
Storage Instruction	Store at 4°C. For long term storage store at -20°C. Aliquot to avoid repeated freezing and thawing.
Note	This product contains sodium azide: a POISONOUS AND HAZARDOUS SUBSTANCE which should be handled by trained staff only.

Applications

- Western Blot (Tissue lysate)

The CBX4 polyclonal antibody (Cat # PAB1690) is used in Western blot to detect CBX4 in mouse kidney tissue lysate.

- Immunohistochemistry (Formalin/PFA-fixed paraffin-embedded sections)

Formalin-fixed and paraffin-embedded human hepatocellular carcinoma tissue reacted with CBX4 polyclonal antibody (Cat # PAB1690), which was peroxidase-conjugated to the secondary antibody, followed by AEC staining. This data demonstrates the use of this antibody for immunohistochemistry; clinical relevance has not been evaluated. HC = hepatocarcinoma.

Gene Info — CBX4

Entrez GeneID	8535
Protein Accession#	NP_003646;O00257
Gene Name	CBX4
Gene Alias	NBP16, PC2, hPC2
Gene Description	chromobox homolog 4 (Pc class homolog, Drosophila)
Omim ID	603079
Gene Ontology	Hyperlink
Gene Summary	O
Other Designations	NS5ATP1-binding protein 16 chromobox homolog 4

Publication Reference

- [The polycomb protein Pc2 is a SUMO E3.](#)

Kagey MH, Melhuish TA, Wotton D.

Cell 2003 Apr; 113(1):127.

- [Interference with the expression of a novel human polycomb protein, hPc2, results in cellular transformation and apoptosis.](#)

Satijn DP, Olson DJ, van der Vlag J, Hamer KM, Lambrechts C, Masselink H, Gunster MJ, Sewalt RG, van Driel R, Otte AP.

Molecular and Cellular Biology 1997 Oct; 17(10):6076.

Application: IF, WB-Ce, WB-Tr, Human, U2OS, C57MG cells