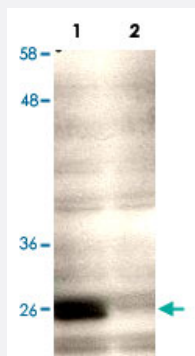


CENPQ polyclonal antibody

Catalog # PAB16897 Size 100 ug

Applications



Western Blot (Transfected lysate)

Western blot using CENPQ polyclonal antibody (Cat # PAB16897) shows detection of endogenous CENPQ in a HeLa whole cell lysate (Lane 1, arrowhead). The blot was incubated for 1.5 hours at room temperature using the primary antibody diluted to 0.5 ug/mL , followed by washes and incubation with to the secondary antibody.

Lane 1 : Lysates from HeLa cells transfected with control sh-virus.
Lane 2 : Lysates from HeLa cells transfected with CENPQ sh-virus.
Personal Communication, Kyung S. Lee, CCR-NCI, Bethesda, MD.

Specification

Product Description Rabbit polyclonal antibody raised against full length recombinant CENPQ.

Immunogen Recombinant protein corresponding to full length human CENPQ.

Host Rabbit

Reactivity Human, Macaque

Form Liquid

Recommend Usage ELISA (1:5000-1:20000)
Western Blot (1:100-1:500)
The optimal working dilution should be determined by the end user.

Storage Buffer In 20 mM KH₂PO₄, 150 mM NaCl, pH 7.2 (0.01% sodium azide)

Storage Instruction Store at 4°C. For long term storage store at -20°C.
Aliquot to avoid repeated freezing and thawing.

Note

This product contains sodium azide: a POISONOUS AND HAZARDOUS SUBSTANCE which should be handled by trained staff only.

Applications

- Western Blot (Transfected lysate)

Western blot using CENPQ polyclonal antibody (Cat # PAB16897) shows detection of endogenous CENPQ in a HeLa whole cell lysate (Lane 1, arrowhead). The blot was incubated for 1.5 hours at room temperature using the primary antibody diluted to 0.5 ug/mL, followed by washes and incubation with the secondary antibody.

Lane 1 : Lysates from HeLa cells transfected with control sh-virus.

Lane 2 : Lysates from HeLa cells transfected with CENPQ sh-virus.

Personal Communication, Kyung S. Lee, CCR-NCI, Bethesda, MD.

- Enzyme-linked Immunoabsorbent Assay

Gene Info — CENPQ

Entrez GeneID	55166
---------------	-----------------------

Gene Name	CENPQ
-----------	-------

Gene Alias	C6orf139, CENP-Q, FLJ10545
------------	----------------------------

Gene Description	centromere protein Q
------------------	----------------------

Omim ID	611506
---------	------------------------

Gene Ontology	Hyperlink
---------------	---------------------------

Gene Summary	CENPQ is a subunit of a CENPH (MIM 605607)-CENPI (MIM 300065)-associated centromeric complex that targets CENPA (MIM 117139) to centromeres and is required for proper kinetochore function and mitotic progression (Okada et al., 2006 [PubMed 16622420]).[supplied by OMIM]
--------------	---

Other Designations	OTTHUMP00000016579
--------------------	--------------------

Publication Reference

- [CENP-O class proteins form a stable complex and are required for proper kinetochore function.](#)

Hori T, Okada M, Maenaka K, Fukagawa T.

Molecular Biology of the Cell 2008 Mar; 19(3):843.

Application: IF, WB, Chicken, DT40 cells

- [The human CENP-A centromeric nucleosome-associated complex.](#)

Foltz DR, Jansen LE, Black BE, Bailey AO, Yates JR 3rd, Cleveland DW.

Nature Cell Biology 2006 May; 8(5):458.

- [The CENP-H-I complex is required for the efficient incorporation of newly synthesized CENP-A into centromeres.](#)

Okada M, Cheeseman IM, Hori T, Okawa K, McLeod IX, Yates JR 3rd, Desai A, Fukagawa T.

Nature Cell Biology 2006 May; 8(5):446.