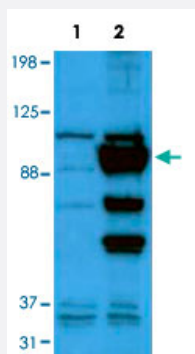


GPC1 polyclonal antibody

Catalog # PAB16896 Size 100 ug

Applications



Western Blot (Transfected lysate)

Western blot using GPC1 polyclonal antibody (Cat # PAB16896) shows detection of exogenous GPC1 in 50 ug 293T whole cell lysate (Lane 2). Minor bands may represent post translational modifications of GPC1. Lane 1 : untransfected 293T cell lysate. The blot was incubated overnight with primary antibody at a 1 : 1,000 dilution followed by washes and exposure to the secondary antibody HRP Gt-a-Rabbit IgG diluted 1 : 5,000 in 5% BLOTTO at 4°C. Personal Communication, Caterina Bianco, CCR-NCI, Bethesda, MD.

Specification

Product Description	Rabbit polyclonal antibody raised against synthetic peptide of GPC1.
Immunogen	A synthetic peptide corresponding to internal region of human GPC1 .
Host	Rabbit
Reactivity	Human, Mouse, Rat
Form	Liquid
Recommend Usage	ELISA (1:10000-1:50000) Western Blot (1:500-1:2000) The optimal working dilution should be determined by the end user.
Storage Buffer	In 20 mM KH ₂ PO ₄ , 150 mM NaCl, pH 7.2 (0.01% sodium azide)
Storage Instruction	Store at 4°C. For long term storage store at -20°C. Aliquot to avoid repeated freezing and thawing.
Note	This product contains sodium azide: a POISONOUS AND HAZARDOUS SUBSTANCE which should be handled by trained staff only.

Applications

- Western Blot (Transfected lysate)

Western blot using GPC1 polyclonal antibody (Cat # PAB16896) shows detection of exogenous GPC1 in 50 ug 293T whole cell lysate (Lane 2). Minor bands may represent post translational modifications of GPC1. Lane 1 : untransfected 293T cell lysate. The blot was incubated overnight with primary antibody at a 1 : 1,000 dilution followed by washes and exposure to the secondary antibody HRP Gt-a-Rabbit IgG diluted 1 : 5,000 in 5% BLOTTO at 4°C. Personal Communication, Caterina Bianco, CCR-NCI, Bethesda, MD.

- Enzyme-linked Immunoabsorbent Assay

Gene Info — GPC1

Entrez GeneID	2817
Gene Name	GPC1
Gene Alias	FLJ38078, glypican
Gene Description	glypican 1
Omim ID	600395
Gene Ontology	Hyperlink
Gene Summary	Cell surface heparan sulfate proteoglycans are composed of a membrane-associated protein core substituted with a variable number of heparan sulfate chains. Members of the glypican-related integral membrane proteoglycan family (GRIPS) contain a core protein anchored to the cytoplasmic membrane via a glycosyl phosphatidylinositol linkage. These proteins may play a role in the control of cell division and growth regulation. [provided by RefSeq]
Other Designations	glypican proteoglycan 1

Publication Reference

- [A Nodal- and ALK4-independent signaling pathway activated by Cripto-1 through Glypican-1 and c-Src.](#)

Bianco C, Strizzi L, Rehman A, Normanno N, Wechselberger C, Sun Y, Khan N, Hirota M, Adkins H, Williams K, Margolis RU, Sanicola M, Salomon DS.

Cancer Research 2003 Mar; 63(6):1192.

Disease

- [Breast cancer](#)
- [Breast Neoplasms](#)
- [Genetic Predisposition to Disease](#)
- [Schizophrenia](#)