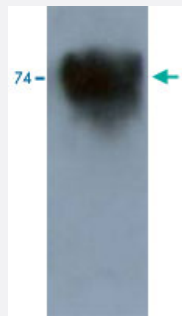


Kcnd3 polyclonal antibody

Catalog # PAB16880

Size 100 ug

Applications



Western Blot (Tissue lysate)

Western blot analysis in mouse brain tissue extract using Kcnd3 polyclonal antibody (Cat # PAB16880).

Specification

Product Description	Rabbit polyclonal antibody raised against synthetic peptide of Kcnd3.
Immunogen	A synthetic peptide (conjugated with KLH) corresponding to mouse Kcnd3.
Sequence	RTTLERYPDT
Host	Rabbit
Reactivity	Mouse
Form	Lyophilized
Recommend Usage	Enzyme Immunoassay (1:500000) Western Blot (1:5000) The optimal working dilution should be determined by the end user.
Storage Buffer	Lyophilized from 10 mM PBS
Storage Instruction	Store at -20°C on dry atmosphere. After reconstitution with deionized water, store at -20°C or lower. Aliquot to avoid repeated freezing and thawing.

Applications

- Western Blot (Tissue lysate)

Western blot analysis in mouse brain tissue extract using Kcnd3 polyclonal antibody (Cat # PAB16880).

- Enzyme Immunoassay

Gene Info — Kcnd3

Entrez GeneID	56543
---------------	-----------------------

Gene Name	Kcnd3
-----------	-------

Gene Alias	AW045978, Kncd3, Kv4.3
------------	------------------------

Gene Description	potassium voltage-gated channel, Shal-related family, member 3
------------------	--

Gene Ontology	Hyperlink
---------------	---------------------------

Gene Summary	Shal-related family
--------------	---------------------

Other Designations	potassium channel Kv4.3L potassium channel Kv4.3M
--------------------	---