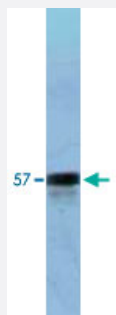


Fibrinogen polyclonal antibody

Catalog # PAB16872

Size 500 ug

Applications



Western Blot (Recombinant protein)

Western blot analysis of human fibrinogen (1.5 ug) using Fibrinogen polyclonal antibody (Cat # PAB16872).

Specification

Product Description	Rabbit polyclonal antibody raised against native Fibrinogen.
Immunogen	Native purified Fibrinogen from human.
Host	Rabbit
Reactivity	Human
Form	Lyophilized
Recommend Usage	Western Blot (1:5000-1:50000) ELISA (1:200000-1:400000) The optimal working dilution should be determined by the end user.
Storage Buffer	Lyophilized from 10 mM PBS, pH 7.4.
Storage Instruction	Store at -20°C. After reconstitution with 500 uL of deionized water, store at -20°C. Aliquot to avoid repeated freezing and thawing.

Applications

- Western Blot (Recombinant protein)

Western blot analysis of human fibrinogen (1.5 ug) using Fibrinogen polyclonal antibody (Cat # PAB16872).

- Enzyme-linked Immunoabsorbent Assay