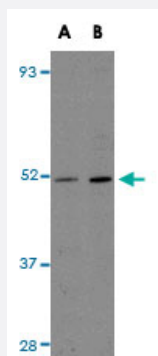


CCDC47 polyclonal antibody

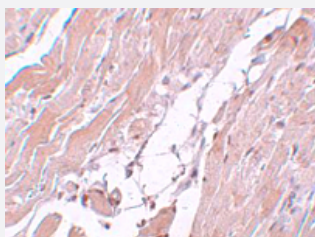
Catalog # PAB16871 Size 100 ug

Applications



Western Blot (Tissue lysate)

Western blot analysis of CCDC47 in mouse heart tissue lysate with CCDC47 polyclonal antibody (Cat # PAB16871) at (A) 1 and (B) 2 ug/mL .



Immunohistochemistry

Immunohistochemical staining of mouse heart tissue with 5 ug/mL CCDC47 polyclonal antibody (Cat # PAB16871).

Specification

Product Description	Rabbit polyclonal antibody raised against synthetic peptide of CCDC47.
Immunogen	A synthetic peptide corresponding to C-terminus 15 amino acids of human CCDC47.
Host	Rabbit
Reactivity	Human, Mouse
Form	Liquid
Recommend Usage	Western Blot (1-2 ug/mL) The optimal working dilution should be determined by the end user.

Storage Buffer	In PBS (0.02% sodium azide)
Storage Instruction	Store at 4°C for three months. For long term storage store at -20°C. Aliquot to avoid repeated freezing and thawing.
Note	This product contains sodium azide: a POISONOUS AND HAZARDOUS SUBSTANCE which should be handled by trained staff only.

Applications

- Western Blot (Tissue lysate)

Western blot analysis of CCDC47 in mouse heart tissue lysate with CCDC47 polyclonal antibody (Cat # PAB16871) at (A) 1 and (B) 2 ug/mL .

- Immunohistochemistry

Immunohistochemical staining of mouse heart tissue with 5 ug/mL CCDC47 polyclonal antibody (Cat # PAB16871).

- Enzyme-linked Immunoabsorbent Assay

Gene Info — CCDC47

Entrez GeneID	57003
Protein Accession#	EAW94279
Gene Name	CCDC47
Gene Alias	GK001, MSTP041
Gene Description	coiled-coil domain containing 47
Gene Ontology	Hyperlink
Other Designations	-