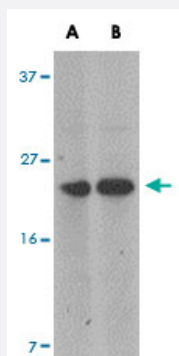


# MARVELD1 polyclonal antibody

Catalog # PAB16868

Size 100 ug

## Applications



### Western Blot (Tissue lysate)

Western blot analysis of MARVELD1 in mouse heart tissue lysate with MARVELD1 polyclonal antibody (Cat # PAB16868) at (A) 1 and (B) 2 ug/mL .

## Specification

<b>Product Description</b>	Rabbit polyclonal antibody raised against synthetic peptide of MARVELD1.
<b>Immunogen</b>	A synthetic peptide corresponding to N-terminus 16 amino acids of human MARVELD1.
<b>Host</b>	Rabbit
<b>Reactivity</b>	Human, Mouse, Rat
<b>Form</b>	Liquid
<b>Recommend Usage</b>	Western Blot (1-2 ug/mL) The optimal working dilution should be determined by the end user.
<b>Storage Buffer</b>	In PBS (0.02% sodium azide)
<b>Storage Instruction</b>	Store at 4°C for three months. For long term storage store at -20°C. Aliquot to avoid repeated freezing and thawing.
<b>Note</b>	This product contains sodium azide: a POISONOUS AND HAZARDOUS SUBSTANCE which should be handled by trained staff only.

## Applications

- Western Blot (Tissue lysate)

Western blot analysis of MARVELD1 in mouse heart tissue lysate with MARVELD1 polyclonal antibody (Cat # PAB16868) at (A) 1 and (B) 2 ug/mL .

- Enzyme-linked Immunoabsorbent Assay

## Gene Info — MARVELD1

Entrez GeneID	<a href="#">83742</a>
Protein Accession#	<a href="#">EAW49903</a>
Gene Name	MARVELD1
Gene Alias	FLJ22343, FLJ23440, GB14, MARVD1, MGC4415, MRVLDC1, RP11-548K23.8, bA548K23.8
Gene Description	MARVEL domain containing 1
Gene Ontology	<a href="#">Hyperlink</a>
Other Designations	-