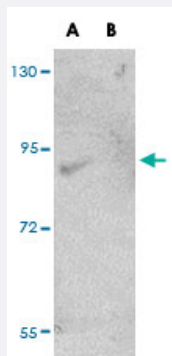


# FAM59A polyclonal antibody

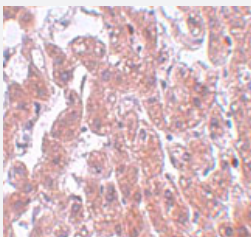
Catalog # PAB16860      Size 100 ug

## Applications



### Western Blot (Tissue lysate)

Western blot analysis of FAM59A in rat liver tissue lysate with FAM59A polyclonal antibody (Cat # PAB16860) at (A) 1 and (B) 2 ug/mL .



### Immunohistochemistry

Immunohistochemical staining of human brain tissue with 5 ug/mL FAM59A polyclonal antibody (Cat # PAB16860).

## Specification

<b>Product Description</b>	Rabbit polyclonal antibody raised against synthetic peptide of FAM59A.
<b>Immunogen</b>	A synthetic peptide corresponding to C-terminus 19 amino acids of human FAM59A.
<b>Host</b>	Rabbit
<b>Reactivity</b>	Human, Mouse, Rat
<b>Form</b>	Liquid
<b>Recommend Usage</b>	Western Blot (1-2 ug/mL) The optimal working dilution should be determined by the end user.

Storage Buffer	In PBS (0.02% sodium azide)
Storage Instruction	Store at 4°C for three months. For long term storage store at -20°C. Aliquot to avoid repeated freezing and thawing.
Note	This product contains sodium azide: a POISONOUS AND HAZARDOUS SUBSTANCE which should be handled by trained staff only.

## Applications

- Western Blot (Tissue lysate)

Western blot analysis of FAM59A in rat liver tissue lysate with FAM59A polyclonal antibody (Cat # PAB16860) at (A) 1 and (B) 2 ug/mL .

- Immunohistochemistry

Immunohistochemical staining of human brain tissue with 5 ug/mL FAM59A polyclonal antibody (Cat # PAB16860).

- Enzyme-linked Immunoabsorbent Assay

## Gene Info — FAM59A

Entrez GeneID	<a href="#">64762</a>
Protein Accession#	<a href="#">Q9H706</a>
Gene Name	FAM59A
Gene Alias	C18orf11, Gm944
Gene Description	family with sequence similarity 59, member A
Gene Ontology	<a href="#">Hyperlink</a>
Gene Summary	O
Other Designations	hypothetical protein LOC64762

## Disease

- [Celiac Disease](#)
- [Genetic Predisposition to Disease](#)

- [Tobacco Use Disorder](#)