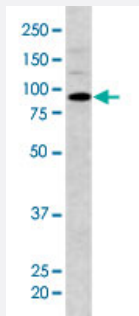


BAP1 polyclonal antibody

Catalog # PAB1686

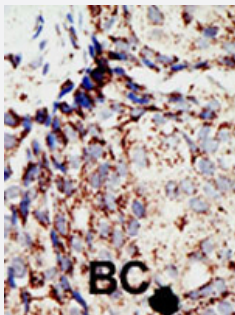
Size 400 uL

Applications



Western Blot (Tissue lysate)

Western blot analysis of mouse testis tissue lysate (35 ug/lane) with BAP1 polyclonal antibody (Cat # PAB1686).



Immunohistochemistry (Formalin/PFA-fixed paraffin-embedded sections)

Formalin-fixed and paraffin-embedded human cancer tissue reacted with BAP1 polyclonal antibody (Cat # PAB1686), which was peroxidase-conjugated to the secondary antibody, followed by DAB staining. This data demonstrates the use of this antibody for immunohistochemistry; clinical relevance has not been evaluated. BC = breast carcinoma.

Specification

Product Description	Rabbit polyclonal antibody raised against synthetic peptide of BAP1.
Immunogen	A synthetic peptide (conjugated with KLH) corresponding to N-terminus of human BAP1.
Host	Rabbit
Reactivity	Human, Mouse
Form	Liquid
Purification	Protein G purification

Recommend Usage	Western Blot (1:1000) Immunohistochemistry (1:50-100) The optimal working dilution should be determined by the end user.
Storage Buffer	In PBS (0.09% sodium azide)
Storage Instruction	Store at 4°C. For long term storage store at -20°C. Aliquot to avoid repeated freezing and thawing.
Note	This product contains sodium azide: a POISONOUS AND HAZARDOUS SUBSTANCE which should be handled by trained staff only.

Applications

- Western Blot (Tissue lysate)

Western blot analysis of mouse testis tissue lysate (35 ug/lane) with BAP1 polyclonal antibody (Cat # PAB1686).

- Immunohistochemistry (Formalin/PFA-fixed paraffin-embedded sections)

Formalin-fixed and paraffin-embedded human cancer tissue reacted with BAP1 polyclonal antibody (Cat # PAB1686), which was peroxidase-conjugated to the secondary antibody, followed by DAB staining. This data demonstrates the use of this antibody for immunohistochemistry; clinical relevance has not been evaluated. BC = breast carcinoma.

Gene Info — BAP1

Entrez GeneID	8314
Protein Accession#	Q92560
Gene Name	BAP1
Gene Alias	DKFZp686N04275, FLJ35406, FLJ37180, HUCEP-13, KIAA0272, UCHL2, hucep-6
Gene Description	BRCA1 associated protein-1 (ubiquitin carboxy-terminal hydrolase)
Omim ID	603089
Gene Ontology	Hyperlink
Gene Summary	The protein encoded by this gene localizes to the nucleus and it interacts with the RING finger domain of the breast cancer 1, early onset protein (BRCA1). This gene is thought to be a tumor suppressor gene that functions in the BRCA1 growth control pathway. There are multiple polyadenylation sites found in this gene. [provided by RefSeq]
Other Designations	BRCA1 associated protein-1 cerebral protein-13 cerebral protein-6 ubiquitin carboxy-terminal hydrolase

Disease

- [Breast cancer](#)
- [Breast Neoplasms](#)
- [Genetic Predisposition to Disease](#)
- [Ovarian Neoplasms](#)
- [Schizophrenia](#)