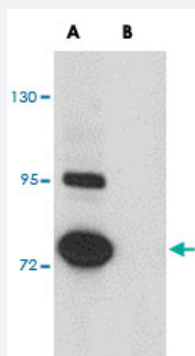


SRPX polyclonal antibody

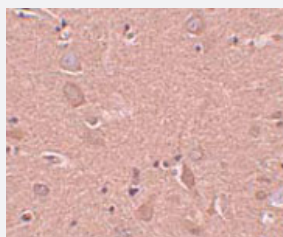
Catalog # PAB16858 Size 100 ug

Applications



Western Blot (Cell lysate)

Western blot analysis of SRPX in SK-N-SH cell lysate with SRPX polyclonal antibody (Cat # PAB16858) at 0.25 ug/mL in (A) the absence and (B) the presence of blocking peptide.



Immunohistochemistry

Immunohistochemical staining of human brain tissue with 5 ug/mL SRPX polyclonal antibody (Cat # PAB16858).

Specification

Product Description	Rabbit polyclonal antibody raised against synthetic peptide of SRPX.
Immunogen	A synthetic peptide corresponding to N-terminus 13 amino acids of human SRPX.
Host	Rabbit
Reactivity	Human, Mouse, Rat
Form	Liquid
Recommend Usage	Western Blot (0.25-0.5 ug/mL) The optimal working dilution should be determined by the end user.

Storage Buffer	In PBS (0.02% sodium azide)
Storage Instruction	Store at 4°C for three months. For long term storage store at -20°C. Aliquot to avoid repeated freezing and thawing.
Note	This product contains sodium azide: a POISONOUS AND HAZARDOUS SUBSTANCE which should be handled by trained staff only.

Applications

- Western Blot (Cell lysate)

Western blot analysis of SRPX in SK-N-SH cell lysate with SRPX polyclonal antibody (Cat # PAB16858) at 0.25 ug/mL in (A) the absence and (B) the presence of blocking peptide.

- Immunohistochemistry

Immunohistochemical staining of human brain tissue with 5 ug/mL SRPX polyclonal antibody (Cat # PAB16858).

- Enzyme-linked Immunoabsorbent Assay

Gene Info — SRPX

Entrez GeneID	8406
Protein Accession#	NP_006298
Gene Name	SRPX
Gene Alias	DRS, ETX1, SRPX1
Gene Description	sushi-repeat-containing protein, X-linked
Omim ID	300187
Gene Ontology	Hyperlink
Gene Summary	O
Other Designations	OTTHUMP00000023141 sushi-repeat-containing protein, X chromosome