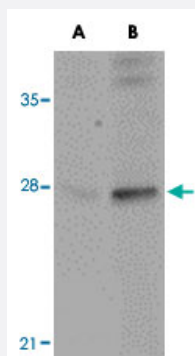


# GOLPH3 polyclonal antibody

Catalog # PAB16847      Size 100 ug

## Applications



### Western Blot (Tissue lysate)

Western blot analysis of GOLPH3 in rat lung tissue lysate with GOLPH3 polyclonal antibody (Cat # PAB16847) at (A) 0.5 and (B) 1 ug/mL .

## Specification

<b>Product Description</b>	Rabbit polyclonal antibody raised against synthetic peptide of GOLPH3.
<b>Immunogen</b>	A synthetic peptide corresponding to N-terminus 14 amino acids of human GOLPH3.
<b>Host</b>	Rabbit
<b>Reactivity</b>	Human, Mouse, Rat
<b>Form</b>	Liquid
<b>Recommend Usage</b>	Western Blot (0.5-1 ug/mL) The optimal working dilution should be determined by the end user.
<b>Storage Buffer</b>	In PBS (0.02% sodium azide)
<b>Storage Instruction</b>	Store at 4°C for three months. For long term storage store at -20°C. Aliquot to avoid repeated freezing and thawing.
<b>Note</b>	This product contains sodium azide: a POISONOUS AND HAZARDOUS SUBSTANCE which should be handled by trained staff only.

## Applications

- Western Blot (Tissue lysate)

Western blot analysis of GOLPH3 in rat lung tissue lysate with GOLPH3 polyclonal antibody (Cat # PAB16847) at (A) 0.5 and (B) 1 ug/mL .

- Enzyme-linked Immunoabsorbent Assay

## Gene Info — GOLPH3

Entrez GeneID	<a href="#">64083</a>
Protein Accession#	<a href="#">AAH12123</a>
Gene Name	GOLPH3
Gene Alias	FLJ90675, GOPP1, GPP34, MIDAS
Gene Description	golgi phosphoprotein 3 (coat-protein)
Gene Ontology	<a href="#">Hyperlink</a>
Gene Summary	The Golgi complex plays a key role in the sorting and modification of proteins exported from the endoplasmic reticulum. The protein encoded by this gene is a peripheral membrane protein of the Golgi stack and may have a regulatory role in Golgi trafficking. Several alternatively spliced transcript variants of this gene have been described, but the full-length nature of these variants has not been determined. [provided by RefSeq]
Other Designations	OTTHUMP00000115847 coat-protein golgi peripheral membrane protein 1, 34 kDa golgi phosphoprotein 3 golgi protein golgi-associated protein

## Disease

- [Disease Progression](#)
- [Disease Susceptibility](#)
- [HIV Infections](#)
- [Tobacco Use Disorder](#)