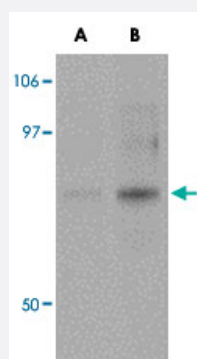


ACBD3 polyclonal antibody

Catalog # PAB16845 Size 100 ug

Applications



Western Blot (Cell lysate)

Western blot analysis of ACBD3 in K-562 cell lysate with ACBD3 polyclonal antibody (Cat # PAB16845) at (A) 1 and (B) 2 ug/mL .

Specification

Product Description	Rabbit polyclonal antibody raised against synthetic peptide of ACBD3.
Immunogen	A synthetic peptide corresponding to N-terminus 16 amino acids from of human ACBD3.
Host	Rabbit
Reactivity	Human
Form	Liquid
Recommend Usage	Western Blot (1-2 ug/mL) The optimal working dilution should be determined by the end user.
Storage Buffer	In PBS (0.02% sodium azide)
Storage Instruction	Store at 4°C for three months. For long term storage store at -20°C. Aliquot to avoid repeated freezing and thawing.
Note	This product contains sodium azide: a POISONOUS AND HAZARDOUS SUBSTANCE which should be handled by trained staff only.

Applications

- Western Blot (Cell lysate)

Western blot analysis of ACBD3 in K-562 cell lysate with ACBD3 polyclonal antibody (Cat # PAB16845) at (A) 1 and (B) 2 ug/mL .

- Enzyme-linked Immunoabsorbent Assay

Gene Info — ACBD3

Entrez GeneID [64746](#)

Protein Accession# [EAW69775](#)

Gene Name ACBD3

Gene Alias GCP60, GOCAP1, GOLPH1, PAP7

Gene Description acyl-Coenzyme A binding domain containing 3

Omim ID [606809](#)

Gene Ontology [Hyperlink](#)

Gene Summary The Golgi complex plays a key role in the sorting and modification of proteins exported from the endoplasmic reticulum. The protein encoded by this gene is involved in the maintenance of Golgi structure and function through its interaction with the integral membrane protein giantin. It may also be involved in the hormonal regulation of steroid formation. [provided by RefSeq]

Other Designations OTTHUMP00000035668|PBR associated protein|PKA (R1alpha)-associated protein|golgi complex associated protein 1, 60kDa|golgi phosphoprotein 1|golgi resident protein GCP60|peripheral benzodiazepine receptor associated protein

Disease

- [Genetic Predisposition to Disease](#)
- [Kidney Failure](#)
- [Lymphoma](#)