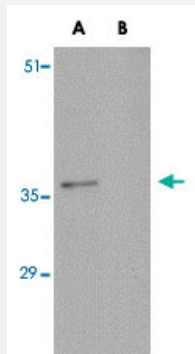


C16orf53 polyclonal antibody

Catalog # PAB16844 Size 100 ug

Applications



Western Blot (Cell lysate)

Western blot analysis of C16orf53 in EL4 cell lysate with C16orf53 polyclonal antibody (Cat # PAB16844) at 1 ug/mL .

Specification

Product Description	Rabbit polyclonal antibody raised against synthetic peptide of C16orf53.
Immunogen	A synthetic peptide corresponding to C-terminus 15 amino acids of human C16orf53.
Host	Rabbit
Reactivity	Human, Mouse
Form	Liquid
Recommend Usage	Western Blot (1-2 ug/mL) The optimal working dilution should be determined by the end user.
Storage Buffer	In PBS (0.02% sodium azide)
Storage Instruction	Store at 4°C for three months. For long term storage store at -20°C. Aliquot to avoid repeated freezing and thawing.
Note	This product contains sodium azide: a POISONOUS AND HAZARDOUS SUBSTANCE which should be handled by trained staff only.

Applications

- Western Blot (Cell lysate)

Western blot analysis of C16orf53 in EL4 cell lysate with C16orf53 polyclonal antibody (Cat # PAB16844) at 1 ug/mL .

- Enzyme-linked Immunoabsorbent Assay

Gene Info — C16orf53

Entrez GeneID	79447
Protein Accession#	NP_078792
Gene Name	C16orf53
Gene Alias	FLJ22459, GAS, MGC4606, PA1
Gene Description	chromosome 16 open reading frame 53
Gene Ontology	Hyperlink
Gene Summary	C16ORF53 (PA1) is a component of a Set1-like multiprotein histone methyltransferase complex (Cho et al., 2007 [PubMed 17500065]).[supplied by OMIM]
Other Designations	PTIP-associated 1 protein glutamate-rich coactivator interacting with SRC1/NCOA1