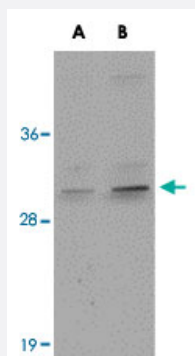


# CENPO polyclonal antibody

Catalog # PAB16842

Size 100 ug

## Applications



### Western Blot (Tissue lysate)

Western blot analysis of CENPO in mouse kidney tissue lysate with CENPO polyclonal antibody (Cat # PAB16842) at (A) 1 and (B) 2 ug/mL .

## Specification

<b>Product Description</b>	Rabbit polyclonal antibody raised against synthetic peptide of CENPO.
<b>Immunogen</b>	A synthetic peptide corresponding to internal region 16 amino acids of human CENPO.
<b>Host</b>	Rabbit
<b>Reactivity</b>	Human, Mouse, Rat
<b>Form</b>	Liquid
<b>Recommend Usage</b>	Western Blot (1-2 ug/mL) The optimal working dilution should be determined by the end user.
<b>Storage Buffer</b>	In PBS (0.02% sodium azide)
<b>Storage Instruction</b>	Store at 4°C for three months. For long term storage store at -20°C. Aliquot to avoid repeated freezing and thawing.
<b>Note</b>	This product contains sodium azide: a POISONOUS AND HAZARDOUS SUBSTANCE which should be handled by trained staff only.

## Applications

- Western Blot (Tissue lysate)

Western blot analysis of CENPO in mouse kidney tissue lysate with CENPO polyclonal antibody (Cat # PAB16842) at (A) 1 and (B) 2 ug/mL .

- Enzyme-linked Immunoabsorbent Assay

## Gene Info — CENPO

Entrez GeneID	<a href="#">79172</a>
Protein Accession#	<a href="#">NP_077298</a>
Gene Name	CENPO
Gene Alias	CENP-O, MGC11266
Gene Description	centromere protein O
Omim ID	<a href="#">611504</a>
Gene Ontology	<a href="#">Hyperlink</a>
Gene Summary	CENPO is a subunit of a CENPH (MIM 605607)-CENPI (MIM 300065)-associated centromeric complex that targets CENPA (MIM 117139) to centromeres and is required for proper kinetochore function and mitotic progression (Okada et al., 2006 [PubMed 16622420]).[supplied by OMIM]
Other Designations	OTTHUMP00000155185

## Disease

- [Tobacco Use Disorder](#)