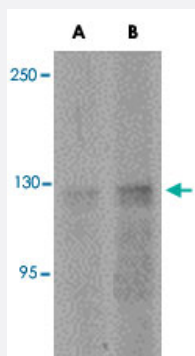


ANO2 polyclonal antibody

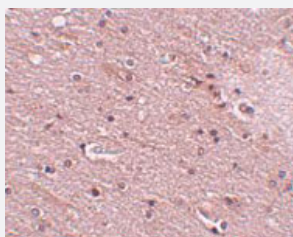
Catalog # PAB16841 Size 100 ug

Applications



Western Blot (Tissue lysate)

Western blot analysis of ANO2 in rat brain tissue lysate with ANO2 polyclonal antibody (Cat # PAB16841) at (A) 1 and (B) 2 ug/mL .



Immunohistochemistry

Immunohistochemical staining of human brain tissue with 5 ug/mL ANO2 polyclonal antibody (Cat # PAB16841).

Specification

Product Description	Rabbit polyclonal antibody raised against synthetic peptide of ANO2.
Immunogen	A synthetic peptide corresponding to N-terminus 19 amino acids of human ANO2.
Host	Rabbit
Reactivity	Human
Form	Liquid
Recommend Usage	Western Blot (1-2 ug/mL) The optimal working dilution should be determined by the end user.

Storage Buffer	In PBS (0.02% sodium azide)
Storage Instruction	Store at 4°C for up to one year. Aliquot to avoid repeated freezing and thawing.
Note	This product contains sodium azide: a POISONOUS AND HAZARDOUS SUBSTANCE which should be handled by trained staff only.

Applications

- Western Blot (Tissue lysate)

Western blot analysis of ANO2 in rat brain tissue lysate with ANO2 polyclonal antibody (Cat # PAB16841) at (A) 1 and (B) 2 ug/mL .

- Immunohistochemistry

Immunohistochemical staining of human brain tissue with 5 ug/mL ANO2 polyclonal antibody (Cat # PAB16841).

- Enzyme-linked Immunoabsorbent Assay

Gene Info — ANO2

Entrez GeneID	57101
Protein Accession#	NP_060513
Gene Name	ANO2
Gene Alias	C12orf3, DKFZp434P102, TMEM16B
Gene Description	anoctamin 2
Omim ID	610109
Gene Ontology	Hyperlink
Other Designations	transmembrane protein 16B (eight membrane-spanning domains)

Disease

- [Panic Disorder](#)
- [Tobacco Use Disorder](#)