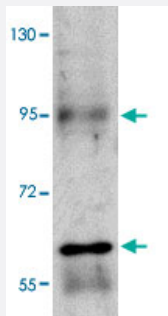


RUSC1 polyclonal antibody

Catalog # PAB16837 Size 100 ug

Applications



Western Blot (Cell lysate)

Western blot analysis of RUSC1 in A-20 cell lysate with RUSC1 polyclonal antibody (Cat # PAB16837) at 1 ug/mL .

Specification

Product Description	Rabbit polyclonal antibody raised against synthetic peptide of RUSC1.
Immunogen	A synthetic peptide corresponding to C-terminus 17 amino acids of human RUSC1.
Host	Rabbit
Reactivity	Human, Mouse, Rat
Form	Liquid
Recommend Usage	Western Blot (1-2 ug/mL) The optimal working dilution should be determined by the end user.
Storage Buffer	In PBS (0.02% sodium azide)
Storage Instruction	Store at 4°C for three months. For long term storage store at -20°C. Aliquot to avoid repeated freezing and thawing.
Note	This product contains sodium azide: a POISONOUS AND HAZARDOUS SUBSTANCE which should be handled by trained staff only.

Applications

- Western Blot (Cell lysate)

Western blot analysis of RUSC1 in A-20 cell lysate with RUSC1 polyclonal antibody (Cat # PAB16837) at 1 ug/mL .

- Enzyme-linked Immunoabsorbent Assay

Gene Info — RUSC1

Entrez GeneID	23623
Protein Accession#	NP_001098673
Gene Name	RUSC1
Gene Alias	DKFZp761A1822, NESCA
Gene Description	RUN and SH3 domain containing 1
Gene Ontology	Hyperlink
Other Designations	OTTHUMP00000015809 OTTHUMP00000015893 OTTHUMP00000015894 OTTHUMP00000015895 OTTHUMP00000015896 new molecule containing SH3 at the carboxy-terminus