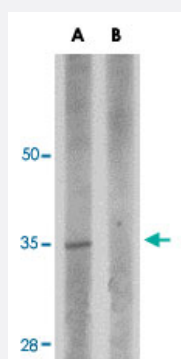


RWDD3 polyclonal antibody

Catalog # PAB16835 Size 100 ug

Applications



Western Blot (Tissue lysate)

Western blot analysis of RWDD3 in rat kidney tissue lysate with RWDD3 polyclonal antibody (Cat # PAB16835) at 1 ug/mL in (A) the absence and (B) the presence of blocking peptide.

Specification

Product Description	Rabbit polyclonal antibody raised against synthetic peptide of RWDD3.
Immunogen	A synthetic peptide corresponding to C-terminus 15 amino acids of human RWDD3.
Host	Rabbit
Reactivity	Human, Mouse, Rat
Form	Liquid
Recommend Usage	Western Blot (1-2 ug/mL) The optimal working dilution should be determined by the end user.
Storage Buffer	In PBS (0.02% sodium azide)
Storage Instruction	Store at 4°C for three months. For long term storage store at -20°C. Aliquot to avoid repeated freezing and thawing.
Note	This product contains sodium azide: a POISONOUS AND HAZARDOUS SUBSTANCE which should be handled by trained staff only.

Applications

- Western Blot (Tissue lysate)

Western blot analysis of RWDD3 in rat kidney tissue lysate with RWDD3 polyclonal antibody (Cat # PAB16835) at 1 ug/mL in (A) the absence and (B) the presence of blocking peptide.

- Enzyme-linked Immunoabsorbent Assay

Gene Info — RWDD3

Entrez GeneID	25950
Protein Accession#	NP_056300
Gene Name	RWDD3
Gene Alias	DKFZp566K023, RSUME
Gene Description	RWD domain containing 3
Gene Ontology	Hyperlink
Other Designations	OTTHUMP00000012586 RWD-containing sumoylation enhancer