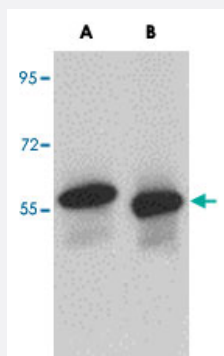


SKA3 polyclonal antibody

Catalog # PAB16834 Size 100 ug

Applications



Western Blot (Tissue lysate)

Western blot analysis of SKA3 in human testis tissue lysate with SKA3 polyclonal antibody (Cat # PAB16834) at (A) 0.5 and (B) 1 ug/mL .

Specification

Product Description	Rabbit polyclonal antibody raised against synthetic peptide of SKA3.
Immunogen	A synthetic peptide corresponding to C-terminus 13 amino acids of human SKA3.
Host	Rabbit
Reactivity	Human, Mouse, Rat
Form	Liquid
Recommend Usage	Western Blot (0.5-1 ug/mL) The optimal working dilution should be determined by the end user.
Storage Buffer	In PBS (0.02% sodium azide)
Storage Instruction	Store at 4°C for three months. For long term storage store at -20°C. Aliquot to avoid repeated freezing and thawing.
Note	This product contains sodium azide: a POISONOUS AND HAZARDOUS SUBSTANCE which should be handled by trained staff only.

Applications

- Western Blot (Tissue lysate)

Western blot analysis of SKA3 in human testis tissue lysate with SKA3 polyclonal antibody (Cat # PAB16834) at (A) 0.5 and (B) 1 ug/mL .

- Enzyme-linked Immunoabsorbent Assay

Gene Info — C13orf3

Entrez GeneID	221150
---------------	------------------------

Protein Accession#	NP_659498
--------------------	---------------------------

Gene Name	C13orf3
-----------	---------

Gene Alias	MGC4832, RAMA1
------------	----------------

Gene Description	chromosome 13 open reading frame 3
------------------	------------------------------------

Gene Ontology	Hyperlink
---------------	---------------------------

Gene Summary	This gene encodes a component of the spindle and kinetochore-associated protein complex that regulates microtubule attachment to the kinetochores during mitosis. The encoded protein localizes to the outer kinetochore and may be required for normal chromosome segregation and cell division. Alternative splicing results in multiple transcript variants. [provided by RefSeq]
--------------	--

Other Designations	hypothetical protein LOC221150
--------------------	--------------------------------