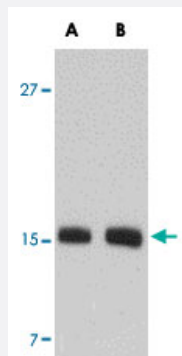


SKA2 polyclonal antibody

Catalog # PAB16833 Size 100 ug

Applications



Western Blot (Cell lysate)

Western blot analysis of SKA2 in NIH/3T3 cell lysate with SKA2 polyclonal antibody (Cat # PAB16833) at (A) 0.5 and (B) 1 ug/mL .

Specification

Product Description	Rabbit polyclonal antibody raised against synthetic peptide of SKA2.
Immunogen	A synthetic peptide corresponding to N-terminus 15 amino acids of human SKA2.
Host	Rabbit
Reactivity	Human, Mouse
Form	Liquid
Recommend Usage	Western Blot (0.5-1 ug/mL) The optimal working dilution should be determined by the end user.
Storage Buffer	In PBS (0.02% sodium azide)
Storage Instruction	Store at 4°C for three months. For long term storage store at -20°C. Aliquot to avoid repeated freezing and thawing.
Note	This product contains sodium azide: a POISONOUS AND HAZARDOUS SUBSTANCE which should be handled by trained staff only.

Applications

- Western Blot (Cell lysate)

Western blot analysis of SKA2 in NIH/3T3 cell lysate with SKA2 polyclonal antibody (Cat # PAB16833) at (A) 0.5 and (B) 1 ug/mL .

- Enzyme-linked Immunoabsorbent Assay

Gene Info — FAM33A

Entrez GeneID	348235
---------------	------------------------

Protein Accession#	NP_872426
--------------------	---------------------------

Gene Name	FAM33A
-----------	--------

Gene Alias	FLJ12758, MGC110975, Ska2
------------	---------------------------

Gene Description	family with sequence similarity 33, member A
------------------	--

Gene Ontology	Hyperlink
---------------	---------------------------

Gene Summary	O
--------------	---

Other Designations	spindle and KT (kinetochore) associated 2 spindle and KT associated 2
--------------------	---