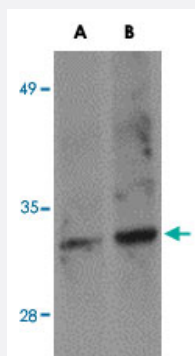


SKA1 polyclonal antibody

Catalog # PAB16832 Size 100 ug

Applications



Western Blot (Cell lysate)

Western blot analysis of SKA1 in A-549 NE cell lysate with SKA1 polyclonal antibody (Cat # PAB16832) at (A) 0.5 and (B) 1 ug/mL .

Specification

Product Description	Rabbit polyclonal antibody raised against synthetic peptide of SKA1.
Immunogen	A synthetic peptide corresponding to C-terminus 13 amino acids of human SKA1.
Host	Rabbit
Reactivity	Human, Mouse, Rat
Form	Liquid
Recommend Usage	Western Blot (0.5-1 ug/mL) The optimal working dilution should be determined by the end user.
Storage Buffer	In PBS (0.02% sodium azide)
Storage Instruction	Store at 4°C for three months. For long term storage store at -20°C. Aliquot to avoid repeated freezing and thawing.
Note	This product contains sodium azide: a POISONOUS AND HAZARDOUS SUBSTANCE which should be handled by trained staff only.

Applications

- Western Blot (Cell lysate)

Western blot analysis of SKA1 in A-549 NE cell lysate with SKA1 polyclonal antibody (Cat # PAB16832) at (A) 0.5 and (B) 1 ug/mL .

- Enzyme-linked Immunoabsorbent Assay

Gene Info — SKA1

Entrez GeneID	220134
---------------	------------------------

Protein Accession#	Q96BD8
--------------------	------------------------

Gene Name	SKA1
-----------	------

Gene Alias	MGC10200, Ska1
------------	----------------

Gene Description	chromosome 18 open reading frame 24
------------------	-------------------------------------

Gene Ontology	Hyperlink
---------------	---------------------------

Other Designations	spindle and KT (kinetochore) associated 1 spindle and KT associated 1
--------------------	---