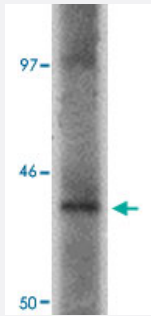


ProSAPiP1 polyclonal antibody

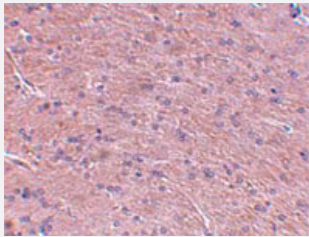
Catalog # PAB16830 Size 100 ug

Applications



Western Blot (Cell lysate)

Western blot analysis of ProSAPiP1 in SK-N-SH cell lysate with ProSAPiP1 polyclonal antibody (Cat # PAB16830) at 1 ug/mL .



Immunohistochemistry

Immunohistochemical staining of rat brain tissue with 2.5 ug/mL ProSAPiP1 polyclonal antibody (Cat # PAB16830).

Specification

Product Description	Rabbit polyclonal antibody raised against synthetic peptide of ProSAPiP1.
Immunogen	A synthetic peptide corresponding to C-terminus 16 amino acids of human ProSAPiP1.
Host	Rabbit
Reactivity	Human, Mouse, Rat
Form	Liquid
Recommend Usage	Western Blot (1-2 ug/mL) The optimal working dilution should be determined by the end user.

Storage Buffer	In PBS (0.02% sodium azide)
Storage Instruction	Store at 4°C for three months. For long term storage store at -20°C. Aliquot to avoid repeated freezing and thawing.
Note	This product contains sodium azide: a POISONOUS AND HAZARDOUS SUBSTANCE which should be handled by trained staff only.

Applications

- Western Blot (Cell lysate)

Western blot analysis of ProSAPiP1 in SK-N-SH cell lysate with ProSAPiP1 polyclonal antibody (Cat # PAB16830) at 1 ug/mL .

- Immunohistochemistry

Immunohistochemical staining of rat brain tissue with 2.5 ug/mL ProSAPiP1 polyclonal antibody (Cat # PAB16830).

- Enzyme-linked Immunoabsorbent Assay

Gene Info — ProSAPiP1

Entrez GeneID	9762
Protein Accession#	NP_055546
Gene Name	ProSAPiP1
Gene Alias	KIAA0552
Gene Description	ProSAPiP1 protein
Gene Ontology	Hyperlink
Other Designations	OTTHUMP00000030091 proline rich synapse associated protein interacting protein 1