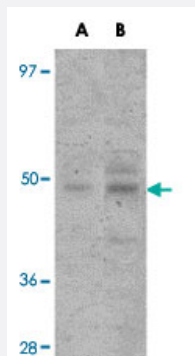


JMJD5 polyclonal antibody

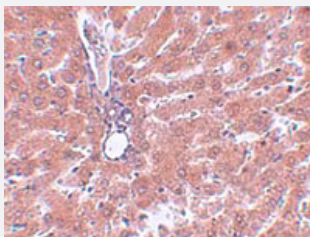
Catalog # PAB16823 Size 100 ug

Applications



Western Blot (Tissue lysate)

Western blot analysis of JMJD5 in human liver tissue lysate with JMJD5 polyclonal antibody (Cat # PAB16823) at (A) 1 and (B) 2 ug/mL .



Immunohistochemistry

Immunohistochemical staining of rat liver tissue with 2.5 ug/mL JMJD5 polyclonal antibody (Cat # PAB16823).

Specification

Product Description	Rabbit polyclonal antibody raised against synthetic peptide of JMJD5.
Immunogen	A synthetic peptide corresponding to C-terminus 18 amino acids of human JMJD5.
Host	Rabbit
Reactivity	Human, Mouse, Rat
Form	Liquid
Recommend Usage	Western Blot (1-2 ug/mL) The optimal working dilution should be determined by the end user.

Storage Buffer	In PBS (0.02% sodium azide)
Storage Instruction	Store at 4°C for three months. For long term storage store at -20°C. Aliquot to avoid repeated freezing and thawing.
Note	This product contains sodium azide: a POISONOUS AND HAZARDOUS SUBSTANCE which should be handled by trained staff only.

Applications

- Western Blot (Tissue lysate)

Western blot analysis of JMJD5 in human liver tissue lysate with JMJD5 polyclonal antibody (Cat # PAB16823) at (A) 1 and (B) 2 ug/mL .

- Immunohistochemistry

Immunohistochemical staining of rat liver tissue with 2.5 ug/mL JMJD5 polyclonal antibody (Cat # PAB16823).

- Enzyme-linked Immunoabsorbent Assay

Gene Info — JMJD5

Entrez GeneID	79831
Protein Accession#	NP_001138820
Gene Name	JMJD5
Gene Alias	FLJ13798
Gene Description	jumonji domain containing 5
Gene Ontology	Hyperlink
Gene Summary	This gene likely encodes a histone lysine demethylase. Studies of a similar protein in mouse indicate a potential role for this protein as a tumor suppressor. Alternatively spliced transcript variants have been described
Other Designations	-