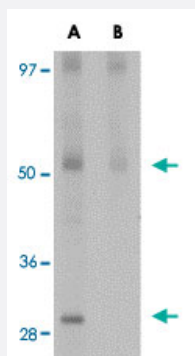


JMJD4 polyclonal antibody

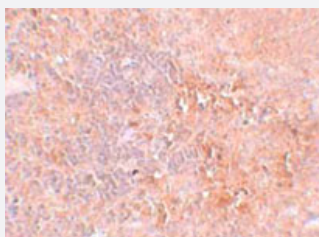
Catalog # PAB16822 Size 100 ug

Applications



Western Blot (Tissue lysate)

Western blot analysis of JMJD4 in human spleen tissue lysate with JMJD4 polyclonal antibody (Cat # PAB16822) at 1 ug/mL in (A) the absence and (B) the presence of blocking peptide.



Immunohistochemistry

Immunohistochemical staining of rat spleen tissue with 2.5 ug/mL JMJD4 polyclonal antibody (Cat # PAB16822).

Specification

Product Description	Rabbit polyclonal antibody raised against synthetic peptide of JMJD4.
Immunogen	A synthetic peptide corresponding to N-terminus 17 amino acids of human JMJD4.
Host	Rabbit
Reactivity	Human, Rat
Form	Liquid
Recommend Usage	Western Blot (1-2 ug/mL) The optimal working dilution should be determined by the end user.

Storage Buffer	In PBS (0.02% sodium azide)
Storage Instruction	Store at 4°C for three months. For long term storage store at -20°C. Aliquot to avoid repeated freezing and thawing.
Note	This product contains sodium azide: a POISONOUS AND HAZARDOUS SUBSTANCE which should be handled by trained staff only.

Applications

- Western Blot (Tissue lysate)

Western blot analysis of JMJD4 in human spleen tissue lysate with JMJD4 polyclonal antibody (Cat # PAB16822) at 1 ug/mL in (A) the absence and (B) the presence of blocking peptide.

- Immunohistochemistry

Immunohistochemical staining of rat spleen tissue with 2.5 ug/mL JMJD4 polyclonal antibody (Cat # PAB16822).

- Enzyme-linked Immunoabsorbent Assay

Gene Info — JMJD4

Entrez GeneID	65094
Protein Accession#	NP_075383
Gene Name	JMJD4
Gene Alias	FLJ12517, MGC129896
Gene Description	jumonji domain containing 4
Gene Ontology	Hyperlink
Other Designations	OTTHUMP00000035836