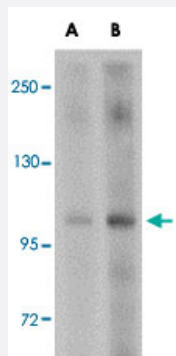


KDM4A polyclonal antibody

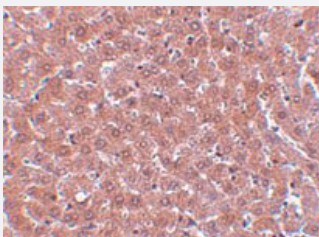
Catalog # PAB16820 Size 100 ug

Applications



Western Blot (Tissue lysate)

Western blot analysis of KDM4A in rat liver tissue lysate with KDM4A polyclonal antibody (Cat # PAB16820) at (A) 1 and (B) 2 ug/mL .



Immunohistochemistry

Immunohistochemical staining of rat liver tissue with 5 ug/mL KDM4A polyclonal antibody (Cat # PAB16820).

Specification

Product Description	Rabbit polyclonal antibody raised against synthetic peptide of KDM4A.
Immunogen	A synthetic peptide corresponding to internal region 14 amino acids of human KDM4A.
Host	Rabbit
Reactivity	Human, Mouse, Rat
Form	Liquid
Recommend Usage	Western Blot (1-2 ug/mL) The optimal working dilution should be determined by the end user.

Storage Buffer	In PBS (0.02% sodium azide)
Storage Instruction	Store at 4°C for three months. For long term storage store at -20°C. Aliquot to avoid repeated freezing and thawing.
Note	This product contains sodium azide: a POISONOUS AND HAZARDOUS SUBSTANCE which should be handled by trained staff only.

Applications

- Western Blot (Tissue lysate)

Western blot analysis of KDM4A in rat liver tissue lysate with KDM4A polyclonal antibody (Cat # PAB16820) at (A) 1 and (B) 2 ug/mL .

- Immunohistochemistry

Immunohistochemical staining of rat liver tissue with 5 ug/mL KDM4A polyclonal antibody (Cat # PAB16820).

- Enzyme-linked Immunoabsorbent Assay

Gene Info — JMJD2A

Entrez GeneID	9682
Protein Accession#	CAH71021
Gene Name	JMJD2A
Gene Alias	JHDM3A, JMJD2, KDM4A, KIAA0677
Gene Description	jumonji domain containing 2A
Omim ID	609764
Gene Ontology	Hyperlink
Gene Summary	This gene is a member of the Jumonji domain 2 (JMJD2) family and encodes a protein containing a JmjN domain, a JmjC domain, a JD2H domain, two TUDOR domains, and two PHD-type zinc fingers. This nuclear protein functions as a trimethylation-specific demethylase, converting specific trimethylated histone residues to the dimethylated form, and as a transcriptional repressor. [provided by RefSeq]
Other Designations	OTTHUMP00000008810 jumonji C domain-containing histone demethylase 3A