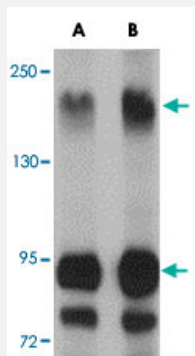


KDM3B polyclonal antibody

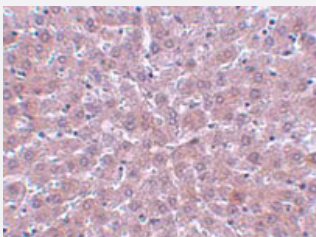
Catalog # PAB16818 Size 100 ug

Applications



Western Blot (Tissue lysate)

Western blot analysis of KDM3B in rat liver tissue lysate with KDM3B polyclonal antibody (Cat # PAB16818) at (A) 1 and (B) 2 ug/mL .



Immunohistochemistry

Immunohistochemical staining of rat liver tissue with 2.5 ug/mL KDM3B polyclonal antibody (Cat # PAB16818).

Specification

Product Description	Rabbit polyclonal antibody raised against synthetic peptide of KDM3B.
Immunogen	A synthetic peptide corresponding to internal region 20 amino acids of human KDM3B.
Host	Rabbit
Reactivity	Human, Mouse, Rat
Form	Liquid
Recommend Usage	Western Blot (1-2 ug/mL) The optimal working dilution should be determined by the end user.

Storage Buffer	In PBS (0.02% sodium azide)
Storage Instruction	Store at 4°C for three months. For long term storage store at -20°C. Aliquot to avoid repeated freezing and thawing.
Note	This product contains sodium azide: a POISONOUS AND HAZARDOUS SUBSTANCE which should be handled by trained staff only.

Applications

- Western Blot (Tissue lysate)

Western blot analysis of KDM3B in rat liver tissue lysate with KDM3B polyclonal antibody (Cat # PAB16818) at (A) 1 and (B) 2 ug/mL .

- Immunohistochemistry

Immunohistochemical staining of rat liver tissue with 2.5 ug/mL KDM3B polyclonal antibody (Cat # PAB16818).

- Enzyme-linked Immunoabsorbent Assay

Gene Info — JMJD1B

Entrez GeneID	51780
Protein Accession#	EAW62141
Gene Name	JMJD1B
Gene Alias	5qNCA, C5orf7, KDM3B, KIAA1082
Gene Description	jumonji domain containing 1B
Omim ID	609373
Gene Ontology	Hyperlink
Other Designations	nuclear protein 5qNCA

Disease

- [Tobacco Use Disorder](#)