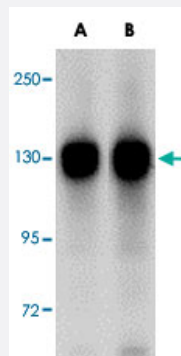


# FAM120A polyclonal antibody

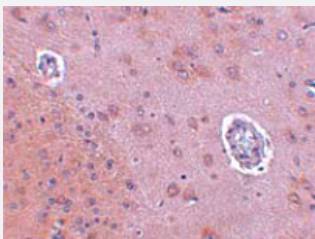
Catalog # PAB16809      Size 100 ug

## Applications



### Western Blot (Cell lysate)

Western blot analysis of FAM120A in SK-N-SH cell lysate with FAM120A polyclonal antibody (Cat # PAB16809) at (A) 0.5 and (B) 1 ug/mL .



### Immunohistochemistry

Immunohistochemical staining of rat brain tissue with 2.5 ug/mL FAM120A polyclonal antibody (Cat # PAB16809).

## Specification

<b>Product Description</b>	Rabbit polyclonal antibody raised against synthetic peptide of FAM120A.
<b>Immunogen</b>	A synthetic peptide corresponding to internal region 18 amino acids of human FAM120A.
<b>Host</b>	Rabbit
<b>Reactivity</b>	Human, Mouse, Rat
<b>Form</b>	Liquid
<b>Recommend Usage</b>	Western Blot (0.5-1 ug/mL) The optimal working dilution should be determined by the end user.

<b>Storage Buffer</b>	In PBS (0.02% sodium azide)
<b>Storage Instruction</b>	Store at 4°C for three months. For long term storage store at -20°C. Aliquot to avoid repeated freezing and thawing.
<b>Note</b>	This product contains sodium azide: a POISONOUS AND HAZARDOUS SUBSTANCE which should be handled by trained staff only.

## Applications

- Western Blot (Cell lysate)

Western blot analysis of FAM120A in SK-N-SH cell lysate with FAM120A polyclonal antibody (Cat # PAB16809) at (A) 0.5 and (B) 1 ug/mL .

- Immunohistochemistry

Immunohistochemical staining of rat brain tissue with 2.5 ug/mL FAM120A polyclonal antibody (Cat # PAB16809).

- Enzyme-linked Immunoabsorbent Assay

## Gene Info — FAM120A

<b>Entrez GeneID</b>	<a href="#">23196</a>
<b>Protein Accession#</b>	<a href="#">NP_055427</a>
<b>Gene Name</b>	FAM120A
<b>Gene Alias</b>	C9orf10, DNAPTP1, DNAPTP5, MGC111527, MGC133257
<b>Gene Description</b>	family with sequence similarity 120A
<b>Gene Ontology</b>	<a href="#">Hyperlink</a>
<b>Other Designations</b>	DNA polymerase-transactivated protein 1 DNA polymerase-transactivated protein 5 OTTHUMP0000021683 hypothetical protein LOC23196

## Disease

- [Tobacco Use Disorder](#)