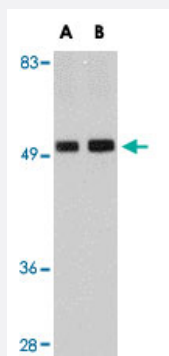


# TMEM214 polyclonal antibody

Catalog # PAB16806      Size 100 ug

## Applications



### Western Blot (Tissue lysate)

Western blot analysis of TMEM214 in rat brain tissue lysate with TMEM214 polyclonal antibody (Cat # PAB16806) at (A) 1 and (B) 2 ug/mL .

## Specification

<b>Product Description</b>	Rabbit polyclonal antibody raised against synthetic peptide of TMEM214.
<b>Immunogen</b>	A synthetic peptide corresponding to internal region 17 amino acids of human TMEM214.
<b>Host</b>	Rabbit
<b>Reactivity</b>	Human, Mouse, Rat
<b>Form</b>	Liquid
<b>Recommend Usage</b>	Western Blot (1-2 ug/mL) The optimal working dilution should be determined by the end user.
<b>Storage Buffer</b>	In PBS (0.02% sodium azide)
<b>Storage Instruction</b>	Store at 4°C for three months. For long term storage store at -20°C. Aliquot to avoid repeated freezing and thawing.
<b>Note</b>	This product contains sodium azide: a POISONOUS AND HAZARDOUS SUBSTANCE which should be handled by trained staff only.

## Applications

- Western Blot (Tissue lysate)

Western blot analysis of TMEM214 in rat brain tissue lysate with TMEM214 polyclonal antibody (Cat # PAB16806) at (A) 1 and (B) 2 ug/mL .

- Enzyme-linked Immunoabsorbent Assay

## Gene Info — TMEM214

Entrez GeneID	<a href="#">54867</a>
---------------	-----------------------

Protein Accession#	<a href="#">NP_060197</a>
--------------------	---------------------------

Gene Name	TMEM214
-----------	---------

Gene Alias	FLJ20254, FLJ39682
------------	--------------------

Gene Description	transmembrane protein 214
------------------	---------------------------

Gene Ontology	<a href="#">Hyperlink</a>
---------------	---------------------------

Other Designations	-
--------------------	---