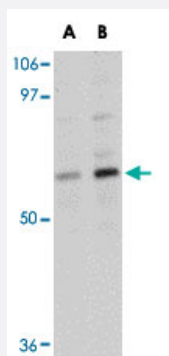


TMEM214 polyclonal antibody

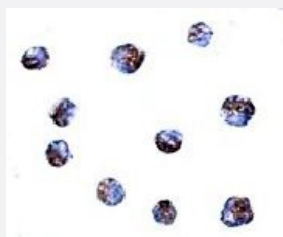
Catalog # PAB16805 Size 100 ug

Applications



Western Blot (Cell lysate)

Western blot analysis of TMEM214 in A-20 cell lysate with TMEM214 polyclonal antibody (Cat # PAB16805) at (A) 1 and (B) 2 ug/mL .



Immunocytochemistry

Immunocytochemistry of TMEM214 in A-20 cells with TMEM214 polyclonal antibody (Cat # PAB16805) at 5 ug/mL .

Specification

Product Description	Rabbit polyclonal antibody raised against synthetic peptide of TMEM214.
Immunogen	A synthetic peptide corresponding to N-terminus 17 amino acids of human TMEM214.
Host	Rabbit
Reactivity	Human, Mouse, Rat
Form	Liquid
Recommend Usage	Western Blot (1-2 ug/mL) The optimal working dilution should be determined by the end user.

Storage Buffer	In PBS (0.02% sodium azide)
Storage Instruction	Store at 4°C for three months. For long term storage store at -20°C. Aliquot to avoid repeated freezing and thawing.
Note	This product contains sodium azide: a POISONOUS AND HAZARDOUS SUBSTANCE which should be handled by trained staff only.

Applications

- Western Blot (Cell lysate)

Western blot analysis of TMEM214 in A-20 cell lysate with TMEM214 polyclonal antibody (Cat # PAB16805) at (A) 1 and (B) 2 ug/mL .

- Immunocytochemistry

Immunocytochemistry of TMEM214 in A-20 cells with TMEM214 polyclonal antibody (Cat # PAB16805) at 5 ug/mL .

- Enzyme-linked Immunoabsorbent Assay

Gene Info — TMEM214

Entrez GeneID	54867
---------------	-----------------------

Protein Accession#	NP_060197
--------------------	---------------------------

Gene Name	TMEM214
-----------	---------

Gene Alias	FLJ20254, FLJ39682
------------	--------------------

Gene Description	transmembrane protein 214
------------------	---------------------------

Gene Ontology	Hyperlink
---------------	---------------------------

Other Designations	-
--------------------	---