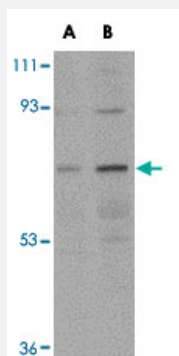


NOTUM polyclonal antibody

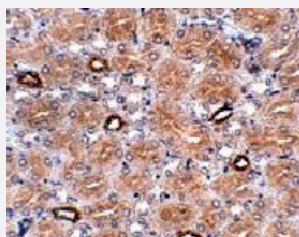
Catalog # PAB16802 Size 100 ug

Applications



Western Blot (Tissue lysate)

Western blot analysis of NOTUM in human kidney tissue lysate with NOTUM polyclonal antibody (Cat # PAB16802) at (A) 0.5 and (B) 1 ug/mL .



Immunohistochemistry

Immunohistochemistry of NOTUM in human brain tissue with NOTUM polyclonal antibody (Cat # PAB16802) at 2.5 ug/mL .

Specification

Product Description	Rabbit polyclonal antibody raised against synthetic peptide of NOTUM.
Immunogen	A synthetic peptide corresponding to N-terminus 19 amino acids of human NOTUM.
Host	Rabbit
Reactivity	Human, Mouse, Rat
Form	Liquid
Recommend Usage	Western Blot (0.5-1 ug/mL) The optimal working dilution should be determined by the end user.

Storage Buffer	In PBS (0.02% sodium azide)
Storage Instruction	Store at 4°C for three months. For long term storage store at -20°C. Aliquot to avoid repeated freezing and thawing.
Note	This product contains sodium azide: a POISONOUS AND HAZARDOUS SUBSTANCE which should be handled by trained staff only.

Applications

- Western Blot (Tissue lysate)

Western blot analysis of NOTUM in human kidney tissue lysate with NOTUM polyclonal antibody (Cat # PAB16802) at (A) 0.5 and (B) 1 ug/mL .

- Immunohistochemistry

Immunohistochemistry of NOTUM in human brain tissue with NOTUM polyclonal antibody (Cat # PAB16802) at 2.5 ug/mL .

- Enzyme-linked Immunoabsorbent Assay

Gene Info — NOTUM

Entrez GeneID	147111
Protein Accession#	NP_848588
Gene Name	NOTUM
Gene Alias	-
Gene Description	notum pectinacylesterase homolog (Drosophila)
Omim ID	609847
Gene Ontology	Hyperlink
Other Designations	notum pectinacylesterase homolog