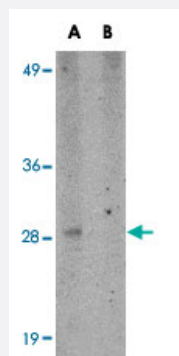


SYPL1 polyclonal antibody

Catalog # PAB16800 Size 100 ug

Applications



Western Blot (Tissue lysate)

Western blot analysis of SYPL1 in human brain tissue lysate with SYPL1 polyclonal antibody (Cat # PAB16800) at 1 ug/mL in (A) the absence and (B) the presence of blocking peptide.

Specification

Product Description	Rabbit polyclonal antibody raised against synthetic peptide of SYPL1.
Immunogen	A synthetic peptide corresponding to N-terminus 16 amino acids of human SYPL1.
Host	Rabbit
Reactivity	Human, Mouse, Rat
Form	Liquid
Recommend Usage	Western Blot (1-2 ug/mL) The optimal working dilution should be determined by the end user.
Storage Buffer	In PBS (0.02% sodium azide)
Storage Instruction	Store at 4°C for three months. For long term storage store at -20°C. Aliquot to avoid repeated freezing and thawing.
Note	This product contains sodium azide: a POISONOUS AND HAZARDOUS SUBSTANCE which should be handled by trained staff only.

Applications

- Western Blot (Tissue lysate)

Western blot analysis of SYPL1 in human brain tissue lysate with SYPL1 polyclonal antibody (Cat # PAB16800) at 1 ug/mL in (A) the absence and (B) the presence of blocking peptide.

- Enzyme-linked Immunoabsorbent Assay

Gene Info — SYPL1

Entrez GeneID	6856
---------------	----------------------

Protein Accession#	NP_006745
--------------------	---------------------------

Gene Name	SYPL1
-----------	-------

Gene Alias	H-SP1, SYPL
------------	-------------

Gene Description	synaptophysin-like 1
------------------	----------------------

Gene Ontology	Hyperlink
---------------	---------------------------

Other Designations	pantophysin synaptophysin-like protein
--------------------	--